

Datasheet for ABIN667235

GRPEL1 Protein (AA 28-217) (His tag)[Go to Product page](#)**1** Image

Overview

Quantity:	50 µg
Target:	GRPEL1
Protein Characteristics:	AA 28-217
Origin:	Human
Source:	Escherichia coli (E. coli)
Protein Type:	Recombinant
Purification tag / Conjugate:	This GRPEL1 protein is labelled with His tag.
Application:	SDS-PAGE (SDS)

Product Details

Characteristics:	GRPEL1, 28-217aa, Human, His tag, E.coli
Purity:	> 90 % by SDS - PAGE

Target Details

Target:	GRPEL1
Alternative Name:	GRPEL1 (GRPEL1 Products)
Background:	GRPEL1 is an essential component of the PAM complex, a complex required for the translocation of transit peptide-containing proteins from the inner membrane into the mitochondrial matrix in an ATP-dependent manner. This protein seems to control the nucleotide-dependent binding of mitochondrial HSP70 to substrate proteins. Recombinant human GRPEL1 protein, fused to His-tag at N-terminus, was expressed in E.coli and purified by

Target Details

using conventional chromatography techniques. Synonyms: grpE protein homolog 1 mitochondrial, FLJ25609, HMGE. NCBI no.: NP_079472

Molecular Weight: 23.6 kDa (211aa) confirmed by MALDI-TOF

Pathways: [SARS-CoV-2 Protein Interactome](#)

Application Details

Restrictions: For Research Use only

Handling

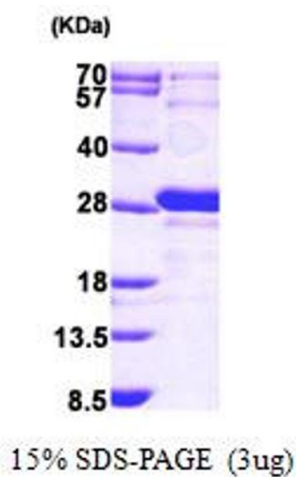
Format: Liquid

Concentration: 1 mg/ml (determined by Bradford assay)

Buffer: Liquid. In 20 mM Tris-HCl buffer (pH8.0) containing 0.2M NaCl, 1mM DTT, 10% glycerol

Storage: 4 °C

Images



SDS-PAGE

Image 1.