



[Go to Product page](#)

Datasheet for ABIN667245

## LIF Protein (AA 23-202) (HIS-GST)

### 1 Image

#### Overview

Quantity:	50 µg
Target:	LIF
Protein Characteristics:	AA 23-202
Origin:	Human
Source:	Escherichia coli (E. coli)
Protein Type:	Recombinant
Purification tag / Conjugate:	This LIF protein is labelled with HIS-GST.
Application:	SDS-PAGE (SDS)

#### Product Details

Characteristics:	LIF, 23-202aa, Human, His-GST tag, E.coli
Purity:	> 90 % by SDS - PAGE

#### Target Details

Target:	LIF
Alternative Name:	LIF ( <a href="#">LIF Products</a> )
Background:	Leukemia inhibitory factor, also known as LIF, is a pleiotropic cytokine that is expressed by a wide variety of cells including activated T lymphocytes, monocytes, mast cells and neuronal cells. It is involved in the induction of hematopoietic differentiation in normal and myeloid leukemia cells, induction of neuronal cell differentiation, regulator of mesenchymal to epithelial conversion during kidney development, and may also have a role in immune tolerance at the

## Target Details

maternal-fetal interface. Recombinant human LIF protein, fused to His GST-tag at N-terminus, was expressed in E.coli and purified by using conventional chromatography techniques.

Synonyms: Leukemia inhibitory factor, CDF, HILDA, DIA, D FACTOR, MLPLI, Emfilermin. NCBI no.: NP\_002300

Molecular Weight: 47.2 kDa (415aa) confirmed by MALDI-TOF

Pathways: [JAK-STAT Signaling](#), [Positive Regulation of Peptide Hormone Secretion](#), [Negative Regulation of Hormone Secretion](#), [Stem Cell Maintenance](#), [Growth Factor Binding](#)

## Application Details

Restrictions: For Research Use only

## Handling

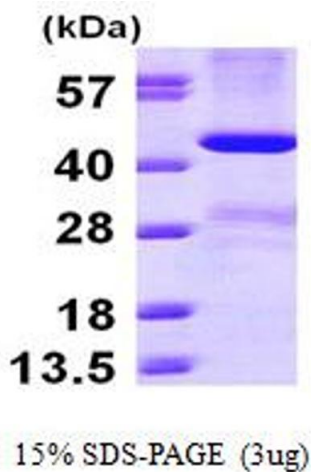
Format: Liquid

Concentration: 1 mg/ml (determined by Bradford assay)

Buffer: Liquid. In 20mM Tris-HCl buffer (pH 8.0) containing 1mM DTT, 20% glycerol, 50mM NaCl

Storage: 4 °C

## Images



### SDS-PAGE

Image 1.