

Datasheet for ABIN667248

**SBDS Protein (AA 1-250) (His tag)**[Go to Product page](#)**1** Image

## Overview

Quantity:	100 µg
Target:	SBDS
Protein Characteristics:	AA 1-250
Origin:	Human
Source:	Escherichia coli (E. coli)
Protein Type:	Recombinant
Purification tag / Conjugate:	This SBDS protein is labelled with His tag.
Application:	SDS-PAGE (SDS)

## Product Details

Characteristics:	SBDS, 1-250aa, Human, His tag, E.coli
Purity:	> 95 % by SDS - PAGE

## Target Details

Target:	SBDS
Alternative Name:	SBDS ( <a href="#">SBDS Products</a> )
Background:	Ribosome maturation protein SBDS is a member of a highly conserved protein family that exists from archaea to vertebrates and plants. The protein may function in RNA metabolism. It may be involved in the biogenesis of the 60S ribosomal subunit and translational activation of ribosomes. Shwachman-Diamond syndrome is a rare autosomal recessive disorder caused by mutations in the SBDS gene. Recombinant human SBDS protein, fused to His-tag at N-terminus,

## Target Details

was expressed in E.coli and purified by using conventional chromatography techniques.

Synonyms: Ribosome maturation protein SBDS, CGI-97, SDS, SWDS. NCBI no.: NP\_057122

Molecular Weight: 30.9kDa (270aa) confirmed by MALDI-TOF

Pathways: [Ribonucleoprotein Complex Subunit Organization](#), [Ribosome Assembly](#)

## Application Details

Restrictions: For Research Use only

## Handling

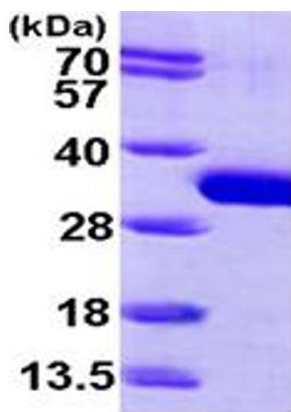
Format: Liquid

Concentration: 0.5mg/ml (determined by Bradford)

Buffer: Liquid. 20mM Tris-HCl buffer (pH8.0) containing 20% glycerol, 2mM DTT, 50mM NaCl, 0.1mM EDTA

Storage: 4 °C

## Images



15% SDS-PAGE (3ug)

### SDS-PAGE

Image 1.