

Datasheet for ABIN667251

**ARL2BP Protein (AA 1-163) (His tag)**[Go to Product page](#)**1** Image

## Overview

Quantity:	100 µg
Target:	ARL2BP
Protein Characteristics:	AA 1-163
Origin:	Human
Source:	Escherichia coli (E. coli)
Protein Type:	Recombinant
Purification tag / Conjugate:	This ARL2BP protein is labelled with His tag.
Application:	SDS-PAGE (SDS)

## Product Details

Characteristics:	ARL2BP, 1-163aa, Human, His tag, E.coli
Purity:	> 90 % by SDS - PAGE

## Target Details

Target:	ARL2BP
Alternative Name:	ARL2BP ( <a href="#">ARL2BP Products</a> )
Background:	ARL2BP is an effector of ADP-ribosylation factor-like 2(ARL2) that is essential for nuclear retention of STAT3. This protein binds to ARL2.GTP with high affinity but does not interact with ARL2.GDP, activated ARF, or RHO proteins. Though predominantly cytosolic, ARL2BP can enter the mitochondria and bind the adenine nucleotide transporter when bound to ARL2. Thus it may also be involved in mitochondria transport and apoptosis. Recombinant human ARL2BP

## Target Details

protein, fused to His-tag at N-terminus, was expressed in E.coli and purified by using conventional chromatography. Synonyms: ADP-ribosylation factor-like 2 binding protein, BART, BART1. NCBI no.: NP\_036238

Molecular Weight: 20.9 kDa (183aa), confirmed by MALDI-TOF

Pathways: [Maintenance of Protein Location](#)

## Application Details

Restrictions: For Research Use only

## Handling

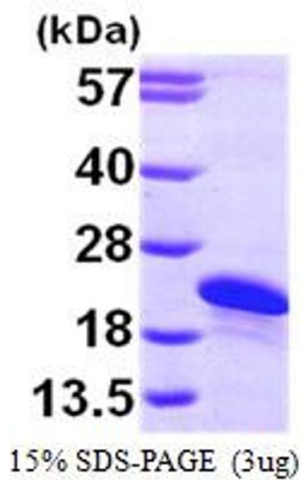
Format: Liquid

Concentration: 1 mg/ml (determined by Bradford assay)

Buffer: Liquid. In 20 mM Tris-HCl Buffer (pH 7.5) containing 10% Glycerol

Storage: 4 °C

## Images



### SDS-PAGE

Image 1.