

Datasheet for ABIN667261

PVALB Protein (AA 1-110) (His tag)[Go to Product page](#)**1** Image

Overview

Quantity:	100 µg
Target:	PVALB
Protein Characteristics:	AA 1-110
Origin:	Human
Source:	Escherichia coli (E. coli)
Protein Type:	Recombinant
Purification tag / Conjugate:	This PVALB protein is labelled with His tag.
Application:	SDS-PAGE (SDS)

Product Details

Characteristics:	PVALB, 1-110aa, Human, His tag, E.coli
Purity:	> 95 % by SDS - PAGE

Target Details

Target:	PVALB
Alternative Name:	PVALB (PVALB Products)
Background:	Parvalbumin alpha, also known PVALB, belongs to a larger group of EF hand proteins. It is a high affinity calcium ion-binding protein that is structurally and functionally similar to calmodulin and troponin C. Parvalbumin is expressed in a specific population of GABAergic interneurons which are thought to play a role in maintaining the balance between excitation and inhibition in the cortex as well as the hippocampus. Recombinant human PVALB protein,

Target Details

fused to His-tag at N-terminus, was expressed in E.coli and purified by using conventional chromatography techniques. Synonyms: Parvalbumin alpha,. NCBI no.: NP_002845

Molecular Weight: 14.6 kDa (134aa) confirmed by MALDI-TOF

Application Details

Restrictions: For Research Use only

Handling

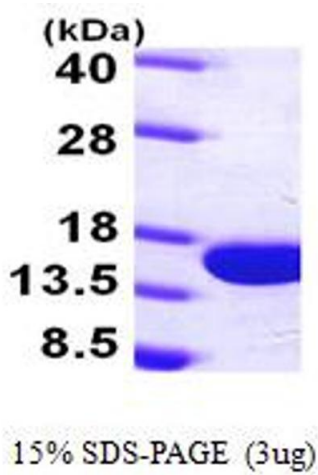
Format: Liquid

Concentration: 1 mg/ml (determined by Bradford assay)

Buffer: Liquid. In 20mM Tris-HCl buffer (pH 8.0) containing 1mM DTT, 10% glycerol, 50mM NaCl

Storage: 4 °C

Images



SDS-PAGE

Image 1.