

Datasheet for ABIN667270

DREAM Protein (AA 1-256) (His tag)[Go to Product page](#)**1** Image

Overview

Quantity:	100 µg
Target:	DREAM (KCNIP3)
Protein Characteristics:	AA 1-256
Origin:	Human
Source:	Escherichia coli (E. coli)
Protein Type:	Recombinant
Purification tag / Conjugate:	This DREAM protein is labelled with His tag.
Application:	SDS-PAGE (SDS)

Product Details

Characteristics:	KCNIP3, 1-256aa, Human, His tag, E.coli
Purity:	> 90 % by SDS – PAGE

Target Details

Target:	DREAM (KCNIP3)
Alternative Name:	KCNIP3 (KCNIP3 Products)
Background:	KCNIP3 is a member of the family of voltage-gated potassium (Kv) channel-interacting proteins, which belong to the recoverin branch of the EF-hand superfamily. Members of the KCNIP family are small calcium binding proteins containing EF-hand-like domains. This protein also functions as a calcium-regulated transcriptional repressor, and interacts with presenilins. Mutations in the presenilin genes have been implicated in Alzheimer's disease. Recombinant

Target Details

human KCNIP3 protein, fused to His-tag at N-terminus, was expressed in E.coli and purified by using conventional chromatography techniques. Synonyms: Calsenilin , CSEN, DREAM, KCHIP3, MGC18289. NCBI no.: NP_038462

Molecular Weight: 31.4 kDa (276aa) confirmed by MALDI-TOF

Application Details

Restrictions: For Research Use only

Handling

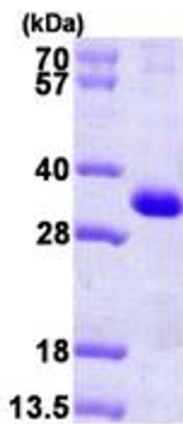
Format: Liquid

Concentration: 1 mg/ml (determined by Bradford assay)

Buffer: Liquid. In 20mM Tris-HCl buffer(pH 8.0) containing 10% glycerol, 2mM DTT, 0.1M NaCl.

Storage: 4 °C

Images



15% SDS-PAGE (3ug)

SDS-PAGE

Image 1.