

Datasheet for ABIN667276

SRP14 Protein (AA 1-136) (His tag)[Go to Product page](#)**1** Image

Overview

Quantity:	100 µg
Target:	SRP14
Protein Characteristics:	AA 1-136
Origin:	Human
Source:	Escherichia coli (E. coli)
Protein Type:	Recombinant
Purification tag / Conjugate:	This SRP14 protein is labelled with His tag.
Application:	SDS-PAGE (SDS)

Product Details

Characteristics:	SRP14, 1-136aa, Human, His tag, E.coli
Purity:	> 85 % by SDS - PAGE

Target Details

Target:	SRP14
Alternative Name:	SRP14 (SRP14 Products)
Background:	SRP14 is a ribonucleoprotein complex that mediates the targeting of proteins to the endoplasmic reticulum. The "Alu domain" of SRP comprises the heterodimer of the SRP9 and SRP14 proteins, which are bound to the 5' and 3' terminal sequences of SRP RNA. SRP9/14 binding may be crucial to the transcription, maturation, nucleolus localization and transport of SRP RNA. Recombinant human SRP14 protein, fused to His-tag at N-terminus, was expressed

Target Details

in E.coli and purified by using conventional chromatography. Synonyms: Signal recognition particle 14 kDa protein , DKFZp468D2027. NCBI no.: NP_003125.2

Molecular Weight: 17.1 kDa (160aa) confirmed by MALDI-TOF (molecular weight on SDS-PAGE will appear higher)

Application Details

Restrictions: For Research Use only

Handling

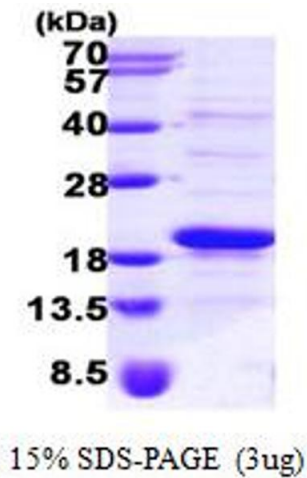
Format: Liquid

Concentration: 1.0 mg/ml (determined by Bradford assay)

Buffer: Liquid. 20mM Tris-HCl buffer (pH8.0) containing 20% glycerol, 0.1M NaCl, 1mM DTT

Storage: 4 °C

Images



SDS-PAGE

Image 1.