

Datasheet for ABIN667292
rala Protein (AA 1-203) (His tag)



[Go to Product page](#)

1 Image

Overview

Quantity:	100 µg
Target:	rala
Protein Characteristics:	AA 1-203
Origin:	Human
Source:	Escherichia coli (E. coli)
Protein Type:	Recombinant
Purification tag / Conjugate:	This rala protein is labelled with His tag.
Application:	SDS-PAGE (SDS)

Product Details

Characteristics:	RALA, 1-203aa, Human, His tag, E.coli
Purity:	> 90 % by SDS - PAGE

Target Details

Target:	rala
Alternative Name:	RALA (rala Products)
Background:	RALA (Ras-related protein Ral-A) belongs to the small GTPase superfamily, Ras family of proteins. RALA mediates a distinct downstream signaling pathway from Ras that facilitates cellular transformation. RALA is also thought to be involved in numerous signaling cascades, including regulation of the cytoskeleton, vesicle trafficking, and endocytosis. Recombinant human RALA protein, fused to His-tag at N-terminus, was expressed in E.coli and purified by

Target Details

using conventional chromatography techniques. Synonyms: Ras-related protein Ral-A, RAL.

NCBI no.: NP_005393

Molecular Weight: 31.8kDa (291aa), confirmed by MALDI-TOF

Pathways: [Neurotrophin Signaling Pathway](#), [SARS-CoV-2 Protein Interactome](#)

Application Details

Restrictions: For Research Use only

Handling

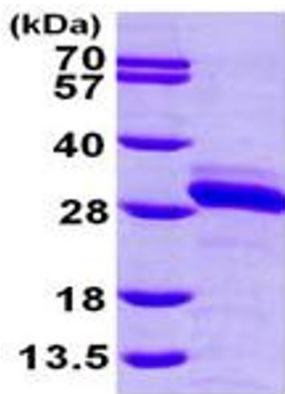
Format: Liquid

Concentration: 0.5mg/ml (determined by Bradford assay)

Buffer: Liquid. 20mM Tris-HCl buffer (pH8.0) containing 10% glycerol, 2mM DTT, 100mM NaCl, 0.1mM PMSF

Storage: 4 °C

Images



15% SDS-PAGE (3ug)

SDS-PAGE

Image 1.