

Datasheet for ABIN667298

RAB6A Protein (AA 1-208) (His tag)[Go to Product page](#)**1** Image

Overview

Quantity:	50 µg
Target:	RAB6A
Protein Characteristics:	AA 1-208
Origin:	Human
Source:	Escherichia coli (E. coli)
Protein Type:	Recombinant
Purification tag / Conjugate:	This RAB6A protein is labelled with His tag.
Application:	SDS-PAGE (SDS)

Product Details

Characteristics:	RAB6A, 1-208aa, Human, His tag, E.coli
Purity:	> 90 % by SDS - PAGE

Target Details

Target:	RAB6A
Alternative Name:	RAB6A (RAB6A Products)
Background:	RAB6A belongs to the small GTPase superfamily. It may be involved in protein transport. It is a regulator of membrane traffic from the Golgi apparatus towards the endoplasmic reticulum (ER) and has a low GTPase activity. Recombinant human RAB6A protein, fused to His-tag at N-terminus, was expressed in E.coli and purified by using conventional chromatography techniques. Synonyms: Ras-related protein Rab-6A, RAB6, RAB6A, RAB6B. NCBI no.:

Target Details

	NP_002860
Molecular Weight:	26.1 kDa (232aa), confirmed by MALDI-TOF

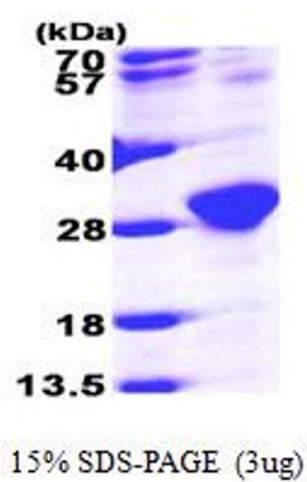
Application Details

Restrictions:	For Research Use only
---------------	-----------------------

Handling

Format:	Liquid
Concentration:	1mg/ml (determined by Bradford assay)
Buffer:	Liquid. In 20mM Tris buffer (pH 8.0) containing 10% glycerol, 1mM DTT, 0.1M NaCl.
Storage:	4 °C

Images



SDS-PAGE
Image 1.