

Datasheet for ABIN667310

MAPRE1 Protein (AA 1-268) (His tag)[Go to Product page](#)**1** Image

Overview

Quantity:	100 µg
Target:	MAPRE1
Protein Characteristics:	AA 1-268
Origin:	Human
Source:	Escherichia coli (E. coli)
Protein Type:	Recombinant
Purification tag / Conjugate:	This MAPRE1 protein is labelled with His tag.
Application:	SDS-PAGE (SDS)

Product Details

Characteristics:	MAPRE1, 1-268aa, Human, His tag, E.coli
Purity:	> 90 % by SDS – PAGE

Target Details

Target:	MAPRE1
Alternative Name:	MAPRE1 (MAPRE1 Products)
Background:	MAPRE1, also known as EB1, belongs to the intermediate/early gene family. This protein first identified by its binding to the APC protein which is often mutated in familial and sporadic forms of colorectal cancer. It localizes to microtubules, especially the growing ends, in interphase cells. During mitosis, the protein is associated with the centrosomes and spindle microtubules. MAPRE1 is involved in microtubule polymerization, and spindle function by

Target Details

	stabilizing microtubules and anchoring them at centrosomes. Recombinant human MAPRE1 protein, fused to His-tag at N-terminus, was expressed in E.coli and purified by using conventional chromatography techniques. Synonyms: Microtubule-associated protein RP/EB family member 1. , EB1, MGC117374, MGC129946. NCBI no.: NP_036457
Molecular Weight:	32.2 kDa (288aa) confirmed by MALDI-TOF
Pathways:	M Phase

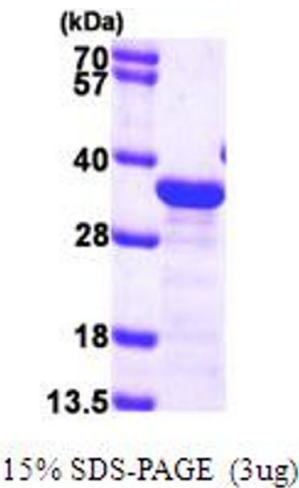
Application Details

Restrictions:	For Research Use only
---------------	-----------------------

Handling

Format:	Liquid
Concentration:	0.5 mg/ml (determined by Bradford assay)
Buffer:	Liquid. In 20mM Tris-HCl buffer(pH 8.0) containing 10% glycerol 2mM DTT, 0.1M NaCl.
Storage:	4 °C

Images



SDS-PAGE

Image 1.