

Datasheet for ABIN667314

CrkL Protein (pTry207) (His tag)[Go to Product page](#)**1** Image

Overview

Quantity:	100 µg
Target:	CrkL (CRKL)
Protein Characteristics:	pTry207
Origin:	Human
Source:	Escherichia coli (E. coli)
Protein Type:	Recombinant
Purification tag / Conjugate:	This CrkL protein is labelled with His tag.
Application:	SDS-PAGE (SDS)

Product Details

Characteristics:	CRKL, 1-303aa, Human, His tag, E.coli
Purity:	> 90 % by SDS – PAGE

Target Details

Target:	CrkL (CRKL)
Alternative Name:	CRKL (CRKL Products)
Background:	CRKL is a protein kinase containing SH2 and SH3 (src homology) domains which has been shown to activate the RAS and JUN kinase signaling pathways and transform fibroblasts in a RAS-dependent fashion. It is a substitutete of the BCR-ABL tyrosine kinase, plays a role in fibroblast transformation by BCR-ABL, and has oncogenic potential. Recombinant human CRKL protein, fused to His-tag at N-terminus, was expressed in E.coli and purified by using

Target Details

	conventional chromatography techniques. Synonyms: Crk-like protein,. NCBI no.: NP_005198
Molecular Weight:	35.9 kDa (323aa), confirmed by MALDI-TOF
Pathways:	Interferon-gamma Pathway , Neurotrophin Signaling Pathway , Signaling of Hepatocyte Growth Factor Receptor

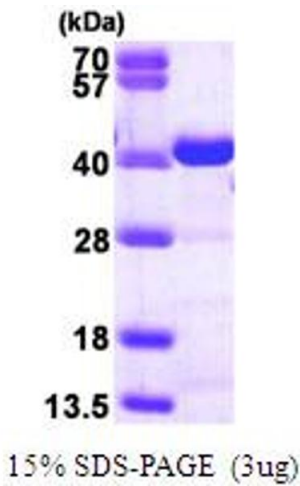
Application Details

Restrictions:	For Research Use only
---------------	-----------------------

Handling

Format:	Liquid
Concentration:	1 mg/ml (determined by Bradford assay)
Buffer:	Liquid. In 20mM Tris-HCl buffer(pH 8.0) containing 10% glycerol, 2mM DTT, 0.1M NaCl.
Storage:	4 °C

Images



SDS-PAGE

Image 1.