

Datasheet for ABIN667319

**RAB27B Protein (AA 1-218) (His tag)**[Go to Product page](#)**1** Image

## Overview

Quantity:	100 µg
Target:	RAB27B
Protein Characteristics:	AA 1-218
Origin:	Human
Source:	Escherichia coli (E. coli)
Protein Type:	Recombinant
Purification tag / Conjugate:	This RAB27B protein is labelled with His tag.
Application:	SDS-PAGE (SDS)

## Product Details

Characteristics:	RAB27B, 1-218aa, Human, His tag, E.coli
Purity:	> 90 % by SDS - PAGE

## Target Details

Target:	RAB27B
Alternative Name:	RAB27B ( <a href="#">RAB27B Products</a> )
Background:	RAB27B belongs to the RAB family and is a critical regulator of vesicular transport. This protein is expressed in pituitary tissue, but is more significantly expressed in brain and spleen. RAB27B may be functionally redundant to Rab27a, as it can rescue Rab27a mutants. Recombinant human RAB27B protein, fused to His-tag at N-terminus, was expressed in E.coli and purified by using conventional chromatography techniques. Synonyms: Ras-related protein Rab-27B ,

## Target Details

C25KG. NCBI no.: NP\_004154

Molecular Weight: 26.7 kDa (238aa), confirmed by MALDI-TOF

## Application Details

Restrictions: For Research Use only

## Handling

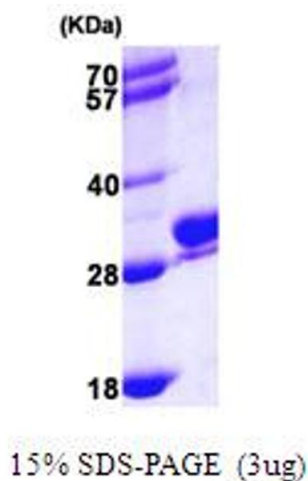
Format: Liquid

Concentration: 1 mg/ml (determined by Bradford assay)

Buffer: Liquid. In 20 mM Tris-HCl buffer (pH8.0) containing 0.1M NaCl, 1mM DTT, 10% glycerol

Storage: 4 °C

## Images



### SDS-PAGE

Image 1.