



[Go to Product page](#)

Datasheet for ABIN667345

## PEF1 Protein (AA 1-284) (His tag)

### 1 Image

#### Overview

|                               |   |
|-------------------------------|---|
| Quantity:                     | 50 µg                                       |
| Target:                       | PEF1  |
| Protein Characteristics:      | AA 1-284                                    |
| Origin:                       | Human                                       |
| Source:                       | Escherichia coli (E. coli)                  |
| Protein Type:                 | Recombinant                                 |
| Purification tag / Conjugate: | This PEF1 protein is labelled with His tag. |
| Application:                  | SDS-PAGE (SDS)                              |

#### Product Details

|                  |                                       |
|------------------|---------------------------------------|
| Characteristics: | PEF1, 1-284aa, Human, His tag, E.coli |
| Purity:          | > 85 % by SDS - PAGE                  |

#### Target Details

|                   |   |
|-------------------|---|
| Target:           | PEF1  |
| Alternative Name: | PEF1 ( <a href="#">PEF1 Products</a> )  |
| Background:       | Penta-EF-hand domain containing 1, also known as PEF1, belongs to the penta-EF-hand protein family, which shares similarities to the apoptosis linked gene ALG-2. PEF1 heterodimerizes with PDCD6/ALG2 and dissociates from PDCD6/ALG2 in the presence of Ca (2+). Also, PEF1 proteins bind calcium and participate in a variety of calcium-dependent processes in vertebrates. Recombinant human PEF1 protein, fused to His-tag at N-terminus, was expressed |

## Target Details

in E.coli and purified by using conventional chromatography techniques. Synonyms: Penta-EF-hand domain containing 1, ABP32, PEF1A. NCBI no.: NP\_036524

Molecular Weight: 34.5 kDa (320aa), confirmed by MALDI-TOF

## Application Details

Restrictions: For Research Use only

## Handling

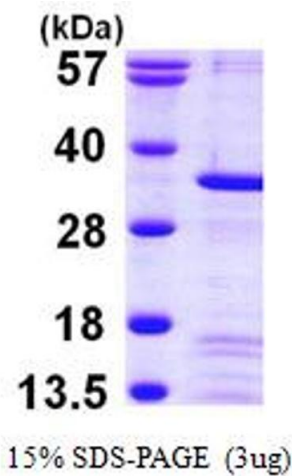
Format: Liquid

Concentration: 0.25 mg/ml (determined by Bradford assay)

Buffer: Liquid. In 20mM Tris-HCl buffer (pH 8.0) containing 1mM DTT, 50% glycerol, 0.2M NaCl

Storage: 4 °C

## Images



### SDS-PAGE

Image 1.