

Datasheet for ABIN667348

NMT2 Protein (AA 1-498) (His tag)



[Go to Product page](#)

1 Image

Overview

Quantity:	100 µg
Target:	NMT2
Protein Characteristics:	AA 1-498
Origin:	Human
Source:	Escherichia coli (E. coli)
Protein Type:	Recombinant
Purification tag / Conjugate:	This NMT2 protein is labelled with His tag.
Application:	SDS-PAGE (SDS)

Product Details

Characteristics:	NMT2, 1-498aa, Human, His tag, E.coli
Purity:	> 85 % by SDS - PAGE

Target Details

Target:	NMT2
Alternative Name:	NMT2 (NMT2 Products)
Background:	NMT2, also known as glycylpeptide N-tetradecan-oyltransferases 2, is cytoplasmic protein that belong to the NMT family of proteins. The proteins in this family catalyze the addition of a myristoyl group to the N-terminal glycine residue of eukaryotic, fungal and viral proteins. They are primarily detected in heart, gut, kidney, liver and placenta. Recombinant human NMT2 protein, fused to His-tag at N-terminus, was expressed in E.coli and purified by using

Target Details

	conventional chromatography techniques. Synonyms: N-myristoyltransferase 2,. NCBI no.: AAH_06376
Molecular Weight:	59.1 kDa (518aa), confirmed by MALDI-TOF
Pathways:	Regulation of G-Protein Coupled Receptor Protein Signaling

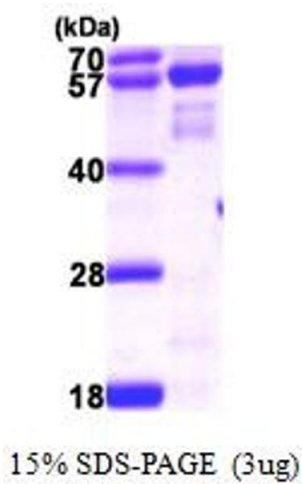
Application Details

Restrictions:	For Research Use only
---------------	-----------------------

Handling

Format:	Liquid
Concentration:	1 mg/ml (determined by Bradford assay)
Buffer:	Liquid. In 20mM Tris-HCl buffer(pH 8.0) containing 10% glycerol, 2mM DTT, 0.1M NaCl
Storage:	4 °C

Images



SDS-PAGE
Image 1.