

Datasheet for ABIN667358

MYL9 Protein (AA 1-172) (His tag)[Go to Product page](#)**1** Image

Overview

Quantity:	50 µg
Target:	MYL9
Protein Characteristics:	AA 1-172
Origin:	Human
Source:	Escherichia coli (E. coli)
Protein Type:	Recombinant
Purification tag / Conjugate:	This MYL9 protein is labelled with His tag.
Application:	SDS-PAGE (SDS)

Product Details

Characteristics:	MYL9, 1-172aa, Human, His tag, E.coli
Purity:	> 90 % by SDS - PAGE

Target Details

Target:	MYL9
Alternative Name:	MYL9 (MYL9 Products)
Background:	MYL9, also known as MLC2, is one of the numerous regulatory myosin light chains. Regulatory myosin light chains regulate contraction in smooth muscle and non-muscle cells via phosphorylation by myosin light chain kinase (MLCK). Phosphorylation of regulatory myosin light chains is catalyzed by MLCK in the presence of calcium and calmodulin and it increases the actin-activated myosin ATPase activity, thereby regulates the contractile activity.

Target Details

Recombinant human MYL9 protein, fused to His-tag at N-terminus, was expressed in E.coli and purified by using conventional chromatography techniques. Synonyms: Myosin regulatory light polypeptide 9, LC20, MGC3505, MLC2, MRLC1, MYRL2. NCBI no.: NP_006088

Molecular Weight: 21.9 kDa (192aa), confirmed by MALDI-TOF

Application Details

Restrictions: For Research Use only

Handling

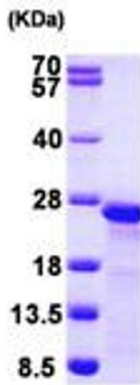
Format: Liquid

Concentration: 0.5 mg/ml (determined by Bradford assay)

Buffer: Liquid. In 20 mM Tris-HCl buffer (pH8.0) containing 0.1M NaCl, 1mM DTT, 10% glycerol

Storage: 4 °C

Images



15% SDS-PAGE (3ug)

SDS-PAGE

Image 1.