



[Go to Product page](#)

Datasheet for ABIN667371

## SRI Protein (AA 1-198) (His tag)

### 1 Image

#### Overview

Quantity:	100 µg
Target:	SRI
Protein Characteristics:	AA 1-198
Origin:	Human
Source:	Escherichia coli (E. coli)
Protein Type:	Recombinant
Purification tag / Conjugate:	This SRI protein is labelled with His tag.
Application:	SDS-PAGE (SDS)

#### Product Details

Characteristics:	SRI, 1-198aa, Human, His tag, E.coli
Purity:	> 90 % by SDS - PAGE

#### Target Details

Target:	SRI
Alternative Name:	SRI ( <a href="#">SRI Products</a> )
Background:	Sorcin, also known as SRI, is a 22-kDa calcium-binding protein initially identified in multidrug-resistant cells. SRI modulates excitation-contraction coupling in the heart and contributes to calcium homeostasis in the heart sarcoplasmic reticulum. Recombinant human SRI protein, fused to His-tag at N-terminus, was expressed in E.coli and purified by using conventional chromatography. Synonyms: Sorcin, 22 kDa protein, CP22, V19, SCN. NCBI no.: NP_003121

## Target Details

Molecular Weight: 24.1 kDa (221aa) confirmed by MALDI-TOF

Pathways: [Transition Metal Ion Homeostasis](#), [Maintenance of Protein Location](#), [Negative Regulation of Transporter Activity](#)

## Application Details

Restrictions: For Research Use only

## Handling

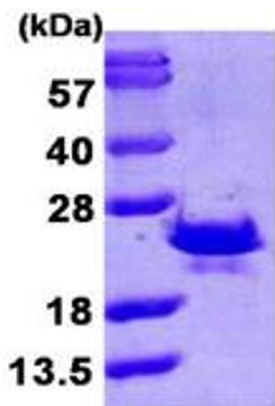
Format: Liquid

Concentration: 0.5 mg/ml (determined by Bradford assay)

Buffer: Liquid. 20mM Tris-HCl buffer (pH8.0) containing 40% glycerol, 0.2M NaCl, 1mM DTT, 0.1mM PMSF

Storage: 4 °C

## Images



15% SDS-PAGE (3ug)

### SDS-PAGE

Image 1.