

Datasheet for ABIN667377
S100A2 Protein (AA 1-97) (His tag)[Go to Product page](#)

1 Image

Overview

| | |
|-------------------------------|---|
| Quantity: | 100 µg |
| Target: | S100A2 |
| Protein Characteristics: | AA 1-97 |
| Origin: | Human |
| Source: | Escherichia coli (E. coli) |
| Protein Type: | Recombinant |
| Purification tag / Conjugate: | This S100A2 protein is labelled with His tag. |
| Application: | SDS-PAGE (SDS) |

Product Details

| | |
|------------------|--|
| Characteristics: | S100A2, 1-97aa, Human, His tag, E.coli |
| Purity: | > 90 % by SDS - PAGE |

Target Details

| | |
|-------------------|--|
| Target: | S100A2 |
| Alternative Name: | S100A2 (S100A2 Products) |
| Background: | S100A2 is a member of the S100 family of proteins containing 2 EF-hand calcium-binding motifs. S100A2 may act as a modulator against excess calcium accumulation in normal human mammary epithelial cells and also play a role in suppressing tumor cell growth. This protein may have a tumor suppressor function. Recombinant human S100A2 protein, fused to His-tag at N-terminus, was expressed in E.coli and purified by using conventional |

Target Details

| | |
|-------------------|---|
| | chromatography techniques. Synonyms: S100 calcium binding protein A2, CAN19, S100L. NCBI no.: NP_005969 |
| Molecular Weight: | 13.1 kDa (117aa) confirmed by MALDI-TOF |
| Pathways: | S100 Proteins |

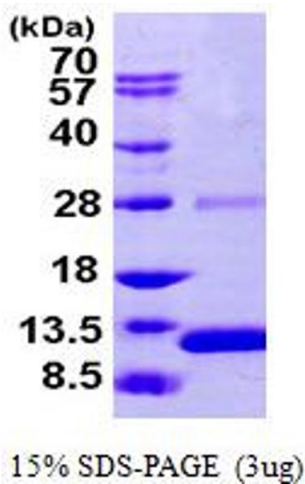
Application Details

| | |
|---------------|-----------------------|
| Restrictions: | For Research Use only |
|---------------|-----------------------|

Handling

| | |
|----------------|--|
| Format: | Liquid |
| Concentration: | 1 mg/ml (determined by Bradford assay) |
| Buffer: | Liquid. In 20mM Tris-HCl buffer (pH 8.0) containing 5mM DTT, 30% glycerol, 0.2M NaCl |
| Storage: | 4 °C |

Images



SDS-PAGE

Image 1.