

Datasheet for ABIN667389

S100A14 Protein (AA 1-104) (His tag)[Go to Product page](#)**1** Image

Overview

Quantity:	100 µg
Target:	S100A14
Protein Characteristics:	AA 1-104
Origin:	Human
Source:	Escherichia coli (E. coli)
Protein Type:	Recombinant
Purification tag / Conjugate:	This S100A14 protein is labelled with His tag.
Application:	SDS-PAGE (SDS)

Product Details

Characteristics:	S100A14, 1-104aa, Human, His tag, E.coli
Purity:	> 95 % by SDS - PAGE

Target Details

Target:	S100A14
Alternative Name:	S100A14 (S100A14 Products)
Background:	S100A14 is a member of a subfamily of proteins related by EF-hand Ca ²⁺ binding protein superfamily. The extracellular functions of the S-100 family may include the ability to enhance neurite outgrowth, involvement in inflammation, and motility of tumor cells. S100A14 contains 2 EF-hand Ca ²⁺ -binding domains, a myristoylation motif, a glycosylation site, and several potential protein kinase phosphorylation sites. It is expressed at high level in the colon and at

Target Details

moderate level in the thymus, kidney, liver, small intestine, and lung. Recombinant human S100A14 protein, fused to His-tag at N-terminus, was expressed in E.coli and purified by using conventional chromatography techniques. Synonyms: S100 calcium binding protein A14, BCMP84, S100A15. NCBI no.: NP_065723

Molecular Weight: 13.8 kDa (124 aa) confirmed by MALDI-TOF

Pathways: [Activation of Innate immune Response](#), [S100 Proteins](#)

Application Details

Restrictions: For Research Use only

Handling

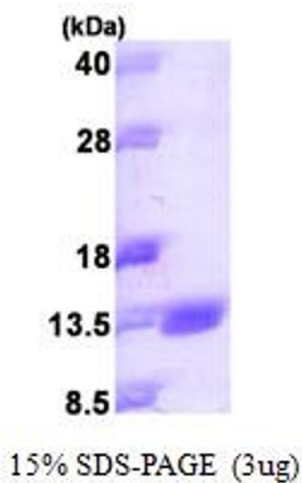
Format: Liquid

Concentration: 1 mg/ml (determined by Bradford assay)

Buffer: Liquid. In 20mM Tris-HCl buffer (pH 8.0) containing 10% glycerol, 2mM DTT.

Storage: 4 °C

Images



SDS-PAGE

Image 1.