

Datasheet for ABIN667397

ALDOC Protein (AA 1-364) (His tag)[Go to Product page](#)**1** Image

Overview

Quantity:	100 µg
Target:	ALDOC
Protein Characteristics:	AA 1-364
Origin:	Human
Source:	Escherichia coli (E. coli)
Protein Type:	Recombinant
Purification tag / Conjugate:	This ALDOC protein is labelled with His tag.
Application:	SDS-PAGE (SDS)

Product Details

Characteristics:	ALDOC, 1-364aa, Human, His tag, E.coli
Purity:	> 95 % by SDS - PAGE

Target Details

Target:	ALDOC
Alternative Name:	ALDOC (ALDOC Products)
Background:	ALDOC, also known as aldolase C, is a member of the class I fructose-biphosphate aldolase family. This protein is a glycolytic enzyme that catalyzes the reversible aldol cleavage of fructose-1,6-biphosphate and fructose 1-phosphate to dihydroxyacetone phosphate and either glyceraldehyde-3-phosphate or glyceraldehydes respectively. It is expressed specifically in the hippocampus and Purkinje cells of the brain. Recombinant human ALDOC protein, fused to His-

Target Details

	tag at N-terminus, was expressed in E.coli and purified by using conventional chromatography techniques. Synonyms: Aldolase C, fructose-bisphosphate., ALDC. NCBI no.: NP_005156
--	--

Molecular Weight:	41.6 kDa (384aa), confirmed by MALDI-TOF
-------------------	--

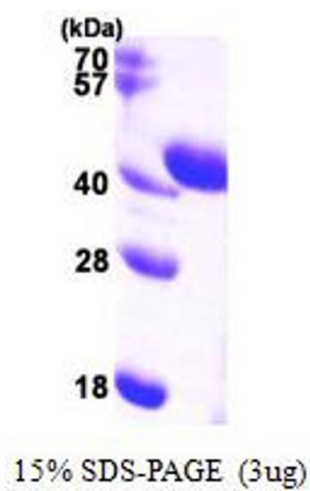
Application Details

Restrictions:	For Research Use only
---------------	-----------------------

Handling

Format:	Liquid
Concentration:	1 mg/ml (determined by Bradford assay)
Buffer:	Liquid. In 20mM Tris-HCl buffer(pH 8.0) containing 10% glycerol, 2mM DTT, 0.1M NaCl.
Storage:	4 °C

Images



SDS-PAGE

Image 1.