

Datasheet for ABIN667408

S100A13 Protein (AA 1-98) (His tag)[Go to Product page](#)**1** Image

Overview

Quantity:	50 µg
Target:	S100A13
Protein Characteristics:	AA 1-98
Origin:	Human
Source:	Escherichia coli (E. coli)
Protein Type:	Recombinant
Purification tag / Conjugate:	This S100A13 protein is labelled with His tag.
Application:	SDS-PAGE (SDS)

Product Details

Characteristics:	S100A13, 1-98aa, Human, His tag, E.coli
Purity:	> 95 % by SDS - PAGE

Target Details

Target:	S100A13
Alternative Name:	S100A13 (S100A13 Products)
Background:	S100A13, also known as S100 calcium binding protein A13, is a member of the S100 family of proteins containing 2 EF-hand calcium-binding motifs. S100 proteins are localized in the cytoplasm and/or nucleus of a wide range of cells, and involved in the regulation of a number of cellular processes such as cell cycle progression and differentiation. It plays a role in the export of proteins that lack a signal peptide and are secreted by an alternative pathway. S100A13

Target Details

protein has been shown to interact with SYT1 and FGF1. Recombinant human S100A13 protein, fused to His-tag at N-terminus, was expressed in E.coli and purified by using conventional chromatography. Synonyms: S100 calcium binding protein A13,. NCBI no.: NP_001019384

Molecular Weight: 13.6 kDa (118aa), confirmed by MALDI-TOF

Pathways: [S100 Proteins](#)

Application Details

Restrictions: For Research Use only

Handling

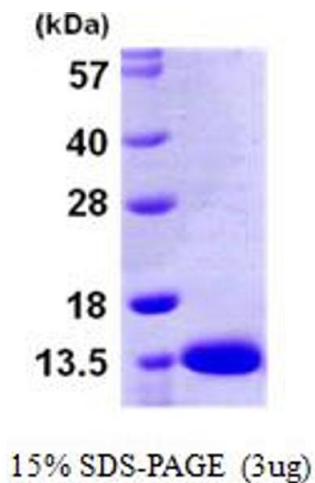
Format: Liquid

Concentration: 1 mg/ml (determined by BCA assay)

Buffer: Liquid. In 20mM Tris-HCl buffer (pH 8.0) containing 50mM NaCl, 20% glycerol

Storage: 4 °C

Images



SDS-PAGE

Image 1.