

Datasheet for ABIN667409

**PSMB9 Protein (AA 21-219) (His tag)**[Go to Product page](#)**1** Image

## Overview

Quantity:	50 µg
Target:	PSMB9
Protein Characteristics:	AA 21-219
Origin:	Human
Source:	Escherichia coli (E. coli)
Protein Type:	Recombinant
Purification tag / Conjugate:	This PSMB9 protein is labelled with His tag.
Application:	SDS-PAGE (SDS)

## Product Details

Characteristics:	PSMB9, 21-219aa, Human, His tag, E.coli
Purity:	> 90 % by SDS - PAGE

## Target Details

Target:	PSMB9
Alternative Name:	PSMB9 ( <a href="#">PSMB9 Products</a> )
Background:	PSMB9, also known as proteasome subunit beta type-9, is a member of the proteasome B-type family, also known as the T1B family, that is a 20S core beta subunit. This protein is located in the class II region of the MHC (major histocompatibility complex). Expression of this protein is induced by gamma interferon and this gene product replaces catalytic subunit 1 (proteasome beta 6 subunit) in the immunoproteasome. Recombinant human PSMB9 protein, fused to His-

## Target Details

tag at N-terminus, was expressed in E.coli and purified by using conventional chromatography.

Synonyms: Proteasome subunit beta type-9, LMP2, PSMB6i, RING12. NCBI no.: NP\_002791

Molecular Weight: 23.5 kDa (220aa), confirmed by MALDI-TOF

Pathways: [Mitotic G1-G1/S Phases](#), [DNA Replication](#), [Synthesis of DNA](#)

## Application Details

Restrictions: For Research Use only

## Handling

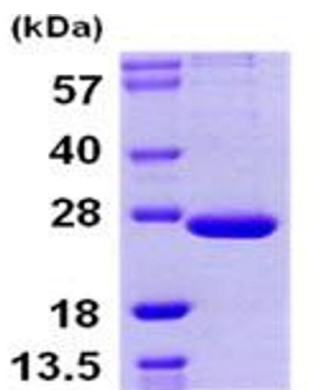
Format: Liquid

Concentration: 1 mg/ml (determined by Bradford assay)

Buffer: Liquid. 20mM Tris-HCl buffer (pH8.0) containing 10% glycerol, 50mM NaCl

Storage: 4 °C

## Images



15% SDS-PAGE (3ug)

### SDS-PAGE

Image 1.