

Datasheet for ABIN667416

SEC13 Protein (AA 1-322) (His tag)



[Go to Product page](#)

1 Image

Overview

Quantity:	100 µg
Target:	SEC13
Protein Characteristics:	AA 1-322
Origin:	Human
Source:	Escherichia coli (E. coli)
Protein Type:	Recombinant
Purification tag / Conjugate:	This SEC13 protein is labelled with His tag.
Application:	SDS-PAGE (SDS)

Product Details

Characteristics:	SEC13, 1-322aa, Human, His tag, E.coli
Purity:	> 95 % by SDS - PAGE

Target Details

Target:	SEC13
Alternative Name:	SEC13 (SEC13 Products)
Background:	SEC13 belongs to the SEC13 family of WD-repeat proteins. It is a constituent of the endoplasmic reticulum and the nuclear pore complex. It has similarity to the yeast SEC13 protein, which is required for vesicle biogenesis from endoplasmic reticulum during the transport of proteins. This protein interacts with SEC31A and SEC31B. SEC31A was found to colocalize with SEC13, one of the other components of COPII, in the subcellular structures

Target Details

corresponding to the vesicle transport function. Recombinant human SEC13 protein, fused to His-tag at N-terminus, was expressed in E.coli and purified by using conventional chromatography techniques. Synonyms: Protein SEC13 homolog, D3S1231E, SEC13L1, SEC13R. NCBI no.: NP_899195

Molecular Weight: 37.7kDa (342aa), confirmed by MALDI-TOF

Application Details

Restrictions: For Research Use only

Handling

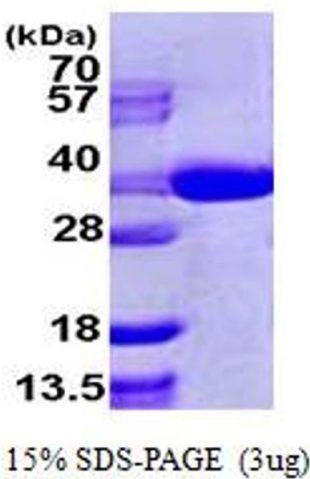
Format: Liquid

Concentration: 0.5mg/ml (determined by Bradford assay)

Buffer: Liquid. In 20mM Tris-HCl buffer (pH 8.0) containing 1mM DTT, 10% glycerol, 100mM NaCl

Storage: 4 °C

Images



SDS-PAGE

Image 1.