

Datasheet for ABIN667422

S100A16 Protein (AA 1-103) (His tag)[Go to Product page](#)**1** Image

Overview

Quantity:	100 µg
Target:	S100A16
Protein Characteristics:	AA 1-103
Origin:	Human
Source:	Escherichia coli (E. coli)
Protein Type:	Recombinant
Purification tag / Conjugate:	This S100A16 protein is labelled with His tag.
Application:	SDS-PAGE (SDS)

Product Details

Characteristics:	S100A16, 1-103aa, Human, His tag, E.coli
Purity:	> 95 % by SDS - PAGE

Target Details

Target:	S100A16
Alternative Name:	S100A16 (S100A16 Products)
Background:	S100 calcium binding protein A16, also known S100A16, is a member of the S100 family of proteins containing 2 EF-hand calcium-binding motifs. S100 proteins are localized in the cytoplasm and nucleus of a wide range of cells, and involved in the regulation of a number of cellular processes such as cell cycle progression and differentiation. Intracellularly, S100A16 is both nuclear and cytoplasmic and apparently exists as a homodimer, trimer and tetramer. It

Target Details

contains two EF-hand motifs with only one high-affinity Ca-binding site and apparently undergoes phosphorylation at Ser103. Recombinant human S100A16 protein, fused to His-tag at N-terminus, was expressed in E.coli and purified by using conventional chromatography techniques. Synonyms: S100 calcium binding protein A16, AAG13, S100F. NCBI no.: NP_525127

Molecular Weight: 13.9 kDa (123aa), confirmed by MALDI-TOF

Pathways: [S100 Proteins](#)

Application Details

Restrictions: For Research Use only

Handling

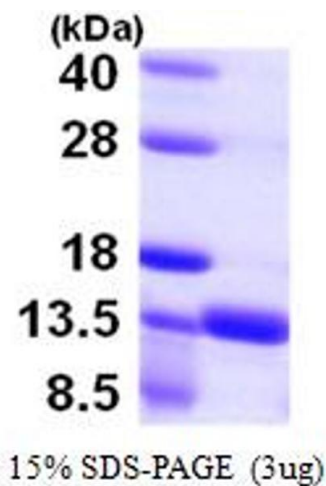
Format: Liquid

Concentration: 1 mg/ml (determined by Bradford assay)

Buffer: Liquid. In 20mM Tris-HCl buffer (pH 8.0) containing 1mM DTT, 40% glycerol, 0.2M NaCl

Storage: 4 °C

Images



SDS-PAGE

Image 1.