

Datasheet for ABIN667436

Galectin 10 Protein (AA 1-142) (His tag)[Go to Product page](#)**1** Image

Overview

Quantity:	100 µg
Target:	Galectin 10 (CLC)
Protein Characteristics:	AA 1-142
Origin:	Human
Source:	Escherichia coli (E. coli)
Protein Type:	Recombinant
Purification tag / Conjugate:	This Galectin 10 protein is labelled with His tag.
Application:	SDS-PAGE (SDS)

Product Details

Characteristics:	CLC, 1-142aa, Human, His tag, E.coli
Purity:	> 90 % by SDS - PAGE

Target Details

Target:	Galectin 10 (CLC)
Alternative Name:	CLC (CLC Products)
Background:	Eosinophil lysophospholipase (CLC), also known as Galectin 10, act on biological membranes to regulate the multifunctional lysophospholipids. CLC is a lysophospholipase expressed in eosinophils and basophils. It hydrolyzes lysophosphatidylcholine to glycerophosphocholine and a free fatty acid. This protein may possess carbohydrate or IgE-binding activities. It is both structurally and functionally related to the galectin family of beta-galactoside binding proteins.

Target Details

It may be associated with inflammation and some myeloid leukemias. Recombinant human CLC protein, fused to His-tag at N-terminus, was expressed in E.coli and purified by using conventional chromatography techniques. Synonyms: Eosinophil lysophospholipase, Galectin 10, Gal-10, GAL10, LGALS10, LGALS10A, LPPL. NCBI no.: NP_001819

Molecular Weight: 18.6 kDa (162aa) confirmed by MALDI-TOF

Pathways: [Regulation of Leukocyte Mediated Immunity](#), [Positive Regulation of Immune Effector Process](#), [Production of Molecular Mediator of Immune Response](#)

Application Details

Restrictions: For Research Use only

Handling

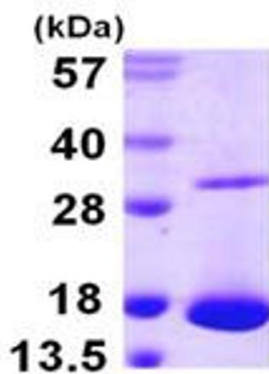
Format: Liquid

Concentration: 0.5 mg/ml (determined by Bradford assay)

Buffer: Liquid. In 20mM Tris-HCl buffer (pH 8.0) containing 1mM DTT, 10% glycerol, 0.1M NaCl

Storage: 4 °C

Images



15% SDS-PAGE (3ug)

SDS-PAGE

Image 1.