

Datasheet for ABIN667448

glsA1 Protein (AA 1-310) (His tag)



[Go to Product page](#)

1 Image

Overview

Quantity:	100 µg
Target:	glsA1 (GLS-A1)
Protein Characteristics:	AA 1-310
Origin:	E. coli
Source:	Escherichia coli (E. coli)
Protein Type:	Recombinant
Purification tag / Conjugate:	This glsA1 protein is labelled with His tag.
Application:	SDS-PAGE (SDS)

Product Details

Characteristics:	glsA1, 1-310aa, E.coli, His tag, E.coli
Purity:	> 95 % by SDS - PAGE

Target Details

Target:	glsA1 (GLS-A1)
Alternative Name:	GlsA1 (GLS-A1 Products)
Background:	GlsA1 (glutaminase1) belongs to the large superfamily of serine-dependent beta-lactamases and penicillin-binding proteins. They are present in most bacteria and eukaryotes and catalyze the hydrolytic deamidation of L-glutamine to L-glutamate and free NH ₄ ⁺ . Recombinant E.coli glsA1 protein, fused to His-tag at N-terminus, was expressed in E.coli and purified by using conventional chromatography techniques. Synonyms: Glutaminase1, ybaS. NCBI no.:

Target Details

NP_415018

Molecular Weight: 35.0 kDa (330aa), confirmed by MALDI-TOF

Application Details

Restrictions: For Research Use only

Handling

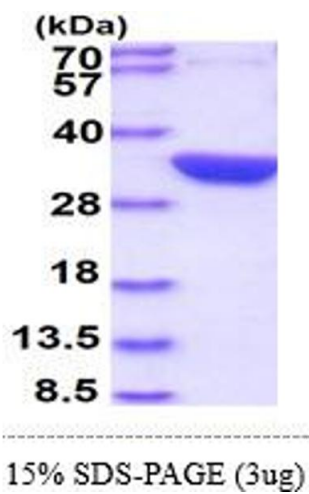
Format: Liquid

Concentration: 1mg/ml (determined by Bradford assay)

Buffer: Liquid. In 20mM Tris-HCl buffer (pH 8.0) containing 1mM DTT, 10% glycerol, 100mM NaCl

Storage: 4 °C

Images



SDS-PAGE

Image 1.