

Datasheet for ABIN667468

ARL6 Protein (AA 1-186) (His tag)[Go to Product page](#)**1** Image

Overview

Quantity:	50 µg
Target:	ARL6
Protein Characteristics:	AA 1-186
Origin:	Human
Source:	Escherichia coli (E. coli)
Protein Type:	Recombinant
Purification tag / Conjugate:	This ARL6 protein is labelled with His tag.
Application:	SDS-PAGE (SDS)

Product Details

Characteristics:	ARL6, 1-186aa, Human, His tag, E.coli
Purity:	> 90 % by SDS - PAGE

Target Details

Target:	ARL6
Alternative Name:	ARL6 (ARL6 Products)
Background:	ARL6, also known ADP-ribosylation factor-like protein 6, belongs to the ARF family of GTP-binding proteins. This protein is known to play essential roles in modulating membrane trafficking and cytoskeletal functions. Mutation in ARL6 causes Bardet-Biedl syndrome (BBS3). BBS is a pleiotropic genetic disorder characterized by obesity, photoreceptor degeneration, polydactyly, hypogenitalism, renal abnormalities and developmental delay. Recombinant

Target Details

human ARL6 protein, fused to His-tag at N-terminus, was expressed in E.coli and purified by using conventional chromatography. Synonyms: ADP-ribosylation factor-like protein 6, BBS3, MGC32934, RP55. NCBI no.: NP_115522

Molecular Weight: 23.2 kDa (206aa), confirmed by MALDI-TOF

Application Details

Restrictions: For Research Use only

Handling

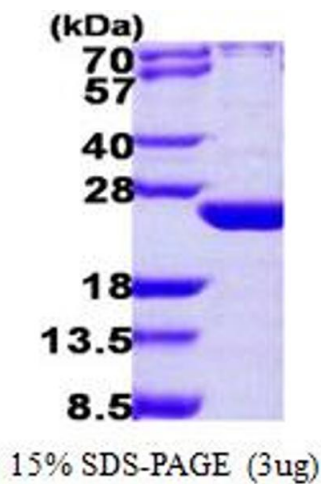
Format: Liquid

Concentration: 0.5 mg/ml (determined by Bradford assay)

Buffer: Liquid. 20mM Tris-HCl buffer (pH8.0) containing 20% glycerol, 0.2M NaCl, 5mM DTT

Storage: 4 °C

Images



SDS-PAGE

Image 1.