

Datasheet for ABIN667481

RAB3D Protein (AA 1-219) (His tag)[Go to Product page](#)**1** Image

Overview

Quantity:	100 µg
Target:	RAB3D
Protein Characteristics:	AA 1-219
Origin:	Human
Source:	Escherichia coli (E. coli)
Protein Type:	Recombinant
Purification tag / Conjugate:	This RAB3D protein is labelled with His tag.
Application:	SDS-PAGE (SDS)

Product Details

Characteristics:	RAB3D, 1-219aa, Human, His tag, E.coli
Purity:	> 90 % by SDS - PAGE

Target Details

Target:	RAB3D
Alternative Name:	RAB3D (RAB3D Products)
Background:	Ras-related protein Rab-3D, also known as GOV, is a member of the Ras superfamily of small Rab GTPases. Rab proteins play an important role for, either in endocytosis or in biosynthetic protein transport. Rab3D mRNA is predominantly expressed in white adipose tissue and, coincident with GLUT4, increases upon differentiation of 3T3-L1 broblasts into insulin-responsive adipocytes. Rab3D displays close structural similarities with Rab 3A, an isoform

Target Details

which has been functionally implicated in regulated exocytosis in various cell types.

Recombinant human Rab3D protein, fused to His-tag at N-terminus, was expressed in E.coli and purified by using conventional chromatography techniques. Synonyms: Ras-related protein Rab-3D, GOV, RAB16. NCBI no.: NP_004274

Molecular Weight: 26.4 kDa (239aa), confirmed by MALDI-TOF (Molecular weight on SDS-PAGE will appear higher)

Application Details

Restrictions: For Research Use only

Handling

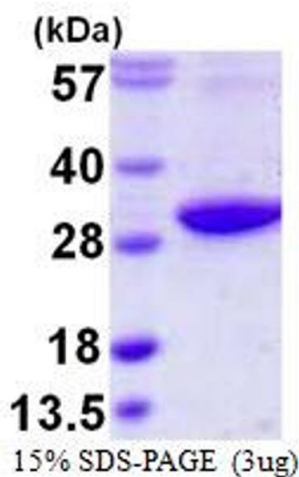
Format: Liquid

Concentration: 0.5 mg/ml (determined by Bradford assay)

Buffer: Liquid. In 20mM Tris-HCl buffer (pH 8.0) containing 1mM DTT, 30% glycerol, 0.2M NaCl

Storage: 4 °C

Images



SDS-PAGE

Image 1.