

Datasheet for ABIN667486

**RAB14 Protein (AA 1-215) (His tag)**[Go to Product page](#)**1** Image

## Overview

Quantity:	50 µg
Target:	RAB14
Protein Characteristics:	AA 1-215
Origin:	Human
Source:	Escherichia coli (E. coli)
Protein Type:	Recombinant
Purification tag / Conjugate:	This RAB14 protein is labelled with His tag.
Application:	SDS-PAGE (SDS)

## Product Details

Characteristics:	RAB14, 1-215aa, Human, His tag, E.coli
Purity:	90 % by SDS - PAGE

## Target Details

Target:	RAB14
Alternative Name:	RAB14 ( <a href="#">RAB14 Products</a> )
Background:	<p>RAB14 is a member of the RAB protein family, low molecular mass monomeric GTPases localized on the cytoplasmic surfaces of distinct membrane bound organelles. This protein is thought to be involved in vesicular trafficking and neurotransmitter release throughout the body and is expressed at high levels in brain, lung, kidney, spleen and thymus. It is involved in the biosynthetic/recycling pathway between the Golgi and endosomal compartments.</p>

Target Details

	Recombinant human RAB14 protein, fused to His-tag at N-terminus, was expressed in E.coli and purified by using conventional chromatography. Synonyms: Ras-related protein Rab-14, FBP, RAB-14. NCBI no.: NP_057406
Molecular Weight:	26.3 kDa(238aa), confirmed by MALDI-TOF
Pathways:	<a href="#">Asymmetric Protein Localization</a> , <a href="#">SARS-CoV-2 Protein Interactome</a>

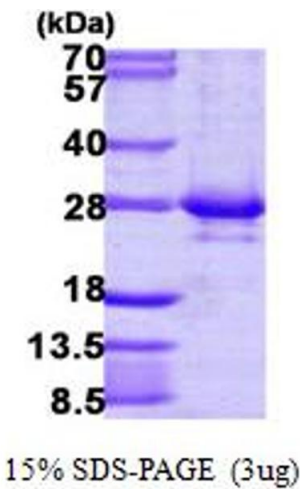
Application Details

Restrictions:	For Research Use only
---------------	-----------------------

Handling

Format:	Liquid
Concentration:	0.5 mg/ml (determined by Bradford assay)
Buffer:	Liquid. 20mM Tris-HCl buffer (pH8.0) containing 20% glycerol, 0.1M NaCl,1mM DTT
Storage:	4 °C

Images



**SDS-PAGE**

Image 1.