

Datasheet for ABIN667487

RAB17 Protein (AA 1-212) (His tag)[Go to Product page](#)**1** Image

Overview

Quantity:	100 µg
Target:	RAB17
Protein Characteristics:	AA 1-212
Origin:	Human
Source:	Escherichia coli (E. coli)
Protein Type:	Recombinant
Purification tag / Conjugate:	This RAB17 protein is labelled with His tag.
Application:	SDS-PAGE (SDS)

Product Details

Characteristics:	RAB17, 1-212aa, Human, His tag, E.coli
Purity:	> 90 % by SDS - PAGE

Target Details

Target:	RAB17
Alternative Name:	RAB17 (RAB17 Products)
Background:	RAB17, also known as Ras-related protein Rab17, belongs to the small GTPase superfamily, Rab GTPases are localized to various intracellular compartments and are known to play important regulatory roles in membrane trafficking. It is regulated traffic through the apical recycling endosome, suggested function in polarized sorting in epithelial cells. Recombinant human RAB17 protein, fused to His-tag at N-terminus, was expressed in E.coli and purified by

Target Details

using conventional chromatography. Synonyms: Ras-related protein Rab-17, FLJ12538. NCBI no.: NP_071894

Molecular Weight: 25.6 kDa(232aa), confirmed by MALDI-TOF

Application Details

Restrictions: For Research Use only

Handling

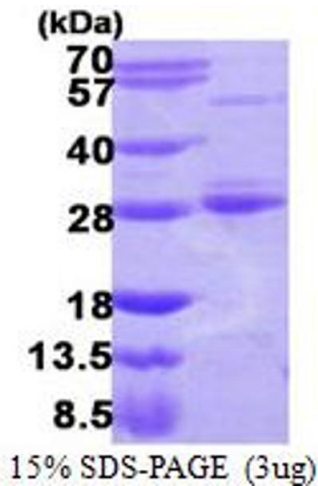
Format: Liquid

Concentration: 0.5 mg/ml (determined by Bradford assay)

Buffer: Liquid. 20mM Tris-HCl buffer (pH8.0) containing 30% glycerol, 0.1M NaCl,1mM DTT

Storage: 4 °C

Images



SDS-PAGE

Image 1.