

Datasheet for ABIN667490

CBX1 Protein (AA 1-185) (His tag)[Go to Product page](#)**1** Image

Overview

Quantity:	100 µg
Target:	CBX1
Protein Characteristics:	AA 1-185
Origin:	Human
Source:	Escherichia coli (E. coli)
Protein Type:	Recombinant
Purification tag / Conjugate:	This CBX1 protein is labelled with His tag.
Application:	SDS-PAGE (SDS)

Product Details

Characteristics:	CBX1, 1-185aa, Human, His tag, E.coli
Purity:	> 85 % by SDS - PAGE

Target Details

Target:	CBX1
Alternative Name:	CBX1 (CBX1 Products)
Background:	CBX1 is a member of the heterochromatin protein family and enriched in the heterochromatin and associated with centromeres. It recognizes and binds histone H3 tails methylated at 'Lys-9', leading to epigenetic repression. Interaction with lamin B receptor (LBR) can contribute to the association of the heterochromatin with the inner nuclear membrane. This protein may play an important role in the epigenetic control of chromatin structure and gene expression.

Target Details

Recombinant human CBX1 protein, fused to His-tag at N-terminus, was expressed in E.coli and purified by using conventional chromatography techniques. Synonyms: Chromobox protein homolog 1, CBX, HP1-BETA, HP1Hs-beta, HP1Hsbeta, M31, MOD1, p25beta. NCBI no.: NP_006798

Molecular Weight: 23.6 kDa (205aa), confirmed by MALDI-TOF (Molecular weight on SDS-PAGE will appear higher)

Application Details

Restrictions: For Research Use only

Handling

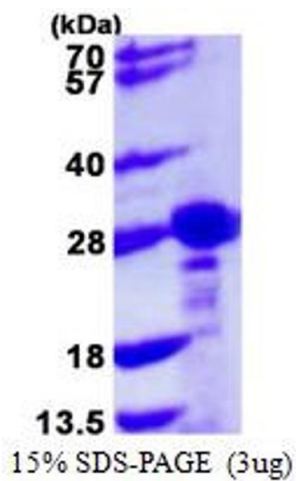
Format: Liquid

Concentration: 1 mg/ml (determined by Bradford assay)

Buffer: Liquid. In 20mM Tris-HCl buffer(pH 8.0) containing 20% glycerol, 2mM DTT, 0.1M NaCl.

Storage: 4 °C

Images



SDS-PAGE

Image 1.