

Datasheet for ABIN667518
MYL12A Protein (AA 1-171) (His tag)



[Go to Product page](#)

1 Image

Overview

Quantity:	100 µg
Target:	MYL12A
Protein Characteristics:	AA 1-171
Origin:	Human
Source:	Escherichia coli (E. coli)
Protein Type:	Recombinant
Purification tag / Conjugate:	This MYL12A protein is labelled with His tag.
Application:	SDS-PAGE (SDS)

Product Details

Characteristics:	MYL12A, 1-171aa, Human, His tag, E.coli
Purity:	> 90 % by SDS - PAGE

Target Details

Target:	MYL12A
Alternative Name:	MYL12A (MYL12A Products)
Background:	MYL12A, also known as myosin regulatory light chain 12A, plays an important role in regulation of both smooth muscle and nonmuscle cell contractile activity via its phosphorylation. This protein implicated in cytokinesis, receptor capping, and cell locomotion. Recombinant human MYL12A protein, fused to His-tag at N-terminus, was expressed in E.coli and purified by using conventional chromatography. Synonyms: Myosin regulatory light chain 12A, MLCB, MRCL3,

Target Details

MRLC3, MYL2B. NCBI no.: NP_006462

Molecular Weight: 22.4 kDa (195aa), confirmed by MALDI-TOF

Application Details

Restrictions: For Research Use only

Handling

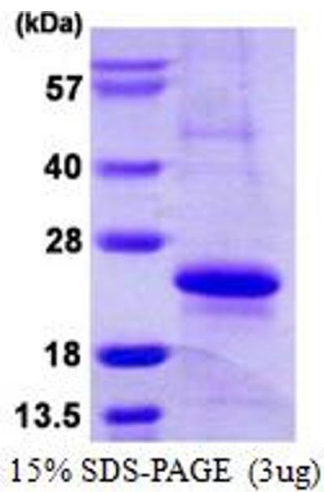
Format: Liquid

Concentration: 0.25 mg/ml (determined by Bradford assay)

Buffer: Liquid. 20mM Tris-HCl buffer (pH8.0) containing 20% glycerol, 1mM DTT

Storage: 4 °C

Images



SDS-PAGE

Image 1.