

Datasheet for ABIN667529

**DCAF7 Protein (AA 19-295) (His tag)**[Go to Product page](#)**1** Image

## Overview

Quantity:	100 µg
Target:	DCAF7
Protein Characteristics:	AA 19-295
Origin:	Human
Source:	Escherichia coli (E. coli)
Protein Type:	Recombinant
Purification tag / Conjugate:	This DCAF7 protein is labelled with His tag.
Application:	SDS-PAGE (SDS)

## Product Details

Characteristics:	DCAF7, 19-295aa, Human, His tag, E.coli
Purity:	> 90 % by SDS - PAGE

## Target Details

Target:	DCAF7
Alternative Name:	DCAF7 ( <a href="#">DCAF7 Products</a> )
Background:	<p>DCAF7, also known as DDB1-and CUL4-associated factor, involved in craniofacial development. This protein acts upstream of the EDN1 pathway and is required for formation of the upper jaw equivalent, the palatoquadrate. The activity required for EDN1 pathway function differs between the first and second arches. This protein associates with DIAPH1 and controls GLI1 transcriptional activity. This protein could be involved in normal and disease skin development.</p>

Target Details

	Recombinant human DCAF7 protein, fused to His-tag at N-terminus, was expressed in E.coli and denatured using detergent during conventional chromatography purification process. Synonyms: DDB1-and CUL4-associated factor 7, AN11, HAN11, SWAN-1, WDR68. NCBI no.: NP_005819
Molecular Weight:	33.6 kDa (298aa)
Pathways:	<a href="#">SARS-CoV-2 Protein Interactome</a>

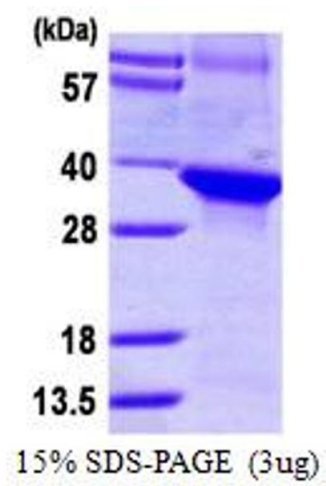
Application Details

Restrictions:	For Research Use only
---------------	-----------------------

Handling

Format:	Liquid
Concentration:	1 mg/ml (determined by Bradford assay)
Buffer:	Liquid. 20mM Tris-HCl buffer (pH8.0) containing 0.4M urea, 1mM DTT
Storage:	4 °C

Images



**SDS-PAGE**

**Image 1.**