

Datasheet for ABIN667530

CYB5A Protein (AA 1-108) (His tag)[Go to Product page](#)**1** Image

Overview

Quantity:	100 µg
Target:	CYB5A
Protein Characteristics:	AA 1-108
Origin:	Human
Source:	Escherichia coli (E. coli)
Protein Type:	Recombinant
Purification tag / Conjugate:	This CYB5A protein is labelled with His tag.
Application:	SDS-PAGE (SDS)

Product Details

Characteristics:	CYB5A, 1-108aa, Human, His tag, E.coli
Purity:	> 95 % by SDS - PAGE

Target Details

Target:	CYB5A
Alternative Name:	CYB5A (CYB5A Products)
Background:	<p>CYB5A, also known as cytochrome b5 isoform 1, belongs to the cytochrome b5 family.</p> <p>Cytochrome b5 is a membrane bound hemoprotein which function as an electron carrier for several membrane bound oxygenases. Recombinant human CYB5A protein, fused to His-tag at N-terminus, was expressed in E.coli and purified by using conventional chromatography.</p> <p>Synonyms: Cytochrome b5, CYB5, MCB5. NCBI no.: NP_683725</p>

Target Details

Molecular Weight: 14.9 kDa (132aa), confirmed by MALDI-TOF

Application Details

Restrictions: For Research Use only

Handling

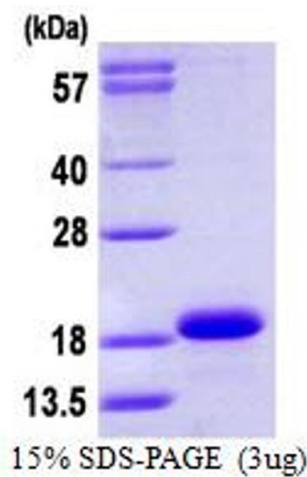
Format: Liquid

Concentration: 1 mg/ml (determined by Bradford assay)

Buffer: Liquid. 20mM Tris-HCl buffer (pH8.0) containing 20% glycerol, 0.1M NaCl, 1mM DTT

Storage: 4 °C

Images



SDS-PAGE

Image 1.