



[Go to Product page](#)

Datasheet for ABIN667531

CLCF1 Protein (AA 28-225) (His tag)

1 Image

Overview

Quantity:	100 µg
Target:	CLCF1
Protein Characteristics:	AA 28-225
Origin:	Human
Source:	Escherichia coli (E. coli)
Protein Type:	Recombinant
Purification tag / Conjugate:	This CLCF1 protein is labelled with His tag.
Application:	SDS-PAGE (SDS)

Product Details

Characteristics:	CLCF1, 28-225aa, Human, His tag, E.coli
Purity:	> 90 % by SDS - PAGE

Target Details

Target:	CLCF1
Alternative Name:	CLCF1 (CLCF1 Products)
Background:	<p>CLCF1, also known as cardiotrophin-like cytokine factor 1, belongs to the interleukin 6 family of cytokines, which are involved in cell signaling through phosphorylation of gp130. CLCF1 has a sequence of 225-amino acids with a 27-aa signal peptide, a molecular mass of 22 kDa in mature form, and the highest homology to cardiotrophin-1 and ciliary neurotrophic factor.</p> <p>CLCF1 can be actively secreted from cells by forming a complex with soluble type I CRLF1 or</p>

Target Details

soluble CNTFR. Defects in CLCF1 cause cold-induced sweating syndrome 2 (CISS2). This syndrome is characterized by a profuse sweating after exposure to cold as well as congenital physical abnormalities of the head and spine. Synonyms: Cardiotrophin-like cytokine factor 1, BSF-3, BSF3, CISS2, CLC, NNT-1, NNT1, NR6. NCBI no.: NP_037378

Molecular Weight: 24.6 kDa (219aa)

Pathways: [Regulation of Leukocyte Mediated Immunity](#), [Positive Regulation of Immune Effector Process](#), [Production of Molecular Mediator of Immune Response](#)

Application Details

Restrictions: For Research Use only

Handling

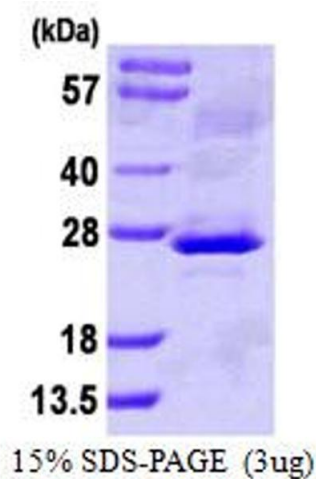
Format: Liquid

Concentration: 1 mg/ml (determined by Bradford assay)

Buffer: Liquid. 20mM sodium citrate (pH 3.5), 0.4M Urea, 10% glycerol

Storage: 4 °C

Images



SDS-PAGE

Image 1.