

Datasheet for ABIN667533

KAT2A Protein (AA 411-837) (His tag)[Go to Product page](#)**1** Image

Overview

Quantity:	100 µg
Target:	KAT2A
Protein Characteristics:	AA 411-837
Origin:	Human
Source:	Escherichia coli (E. coli)
Protein Type:	Recombinant
Purification tag / Conjugate:	This KAT2A protein is labelled with His tag.
Application:	SDS-PAGE (SDS)

Product Details

Characteristics:	GCN5L2, 411-837aa, Human, His tag, E.coli
Purity:	> 90 % by SDS - PAGE

Target Details

Target:	KAT2A
Alternative Name:	GCN5L2 (KAT2A Products)
Background:	<p>GCN5L2(General control of amino acid synthesis protein 5 like 2) belongs to the GCN5 family. It functions as a histone acetyltransferase (HAT) to promote transcriptional activation.</p> <p>Acetylation of histones gives a specific tag for epigenetic transcription activation. GCN5L2 has been shown to interact with Ku70, TAF9, transcription initiation protein SPT3 homolog, TADA2L, Ku80 and DDB1. Recombinant human GCN5L2 protein, fused to His-tag at N-terminus, was</p>

Target Details

expressed in E.coli and purified by using conventional chromatography techniques. Synonyms: Histone acetyltransferase KAT2A, GCN5, GCN5L2, hGCN5, PCAF-b. NCBI no.: NP_066564

Molecular Weight: 51.1kDa (447a), confirmed by MALDI-TOF

Pathways: [Chromatin Binding](#), [Tube Formation](#)

Application Details

Restrictions: For Research Use only

Handling

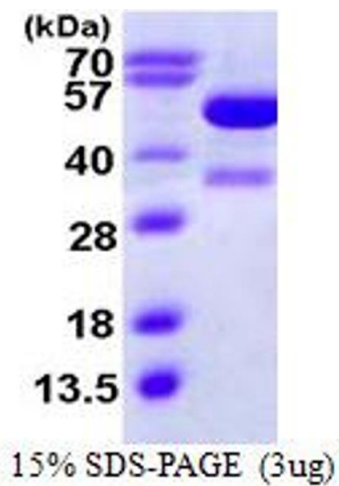
Format: Liquid

Concentration: 0.25mg/ml (determined by Bradford assay)

Buffer: Liquid. In 20mM Tris-HCl buffer (pH 8.0) containing 5mM DTT, 40% glycerol, 200mM NaCl, 1mM EDTA

Storage: 4 °C

Images



SDS-PAGE

Image 1.