

Datasheet for ABIN667540

MPI Protein (AA 1-362) (His tag)[Go to Product page](#)**1** Image

Overview

Quantity:	100 µg
Target:	MPI
Protein Characteristics:	AA 1-362
Origin:	Human
Source:	Escherichia coli (E. coli)
Purification tag / Conjugate:	This MPI protein is labelled with His tag.
Application:	SDS-PAGE (SDS)

Product Details

Characteristics:	MPI, 1-362aa, Human, His tag, E.coli
Purity:	> 90 % by SDS - PAGE

Target Details

Target:	MPI
Alternative Name:	MPI (MPI Products)
Background:	Mannose-6-phosphate isomerase, also known as MPI, belongs to the mannose-6-phosphate isomerase type 1 family, and is expressed in all tissues, more abundantly in heart, brain and skeletal muscle. Localized to the cytoplasm, MPI utilizes zinc as a cofactor and catalyzes the interconversion of fructose-6-phosphate and mannose-6-phosphate. Mutations in the MPI gene were found in patients with carbohydrate-deficient glycoprotein syndrome, type Ib. Synonyms: Mannose-6-phosphate isomerase, PMI, PMI1. NCBI no.: AAH17351

Target Details

Molecular Weight: 41.9 kDa (382aa)

Application Details

Restrictions: For Research Use only

Handling

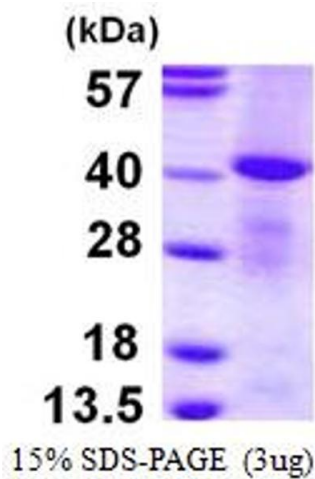
Format: Liquid

Concentration: 0.5 mg/ml (determined by Bradford assay)

Buffer: Liquid. In 20mM Tris-HCl buffer (pH 8.0) containing 0.4M Urea, 5% glycerol

Storage: 4 °C

Images



SDS-PAGE

Image 1.