

Datasheet for ABIN667541

**Ephrin B1 Protein (EFNB1) (AA 28-237) (His tag)**[Go to Product page](#)**1** Image

## Overview

Quantity:	100 µg
Target:	Ephrin B1 (EFNB1)
Protein Characteristics:	AA 28-237
Origin:	Human
Source:	Escherichia coli (E. coli)
Protein Type:	Recombinant
Purification tag / Conjugate:	This Ephrin B1 protein is labelled with His tag.
Application:	SDS-PAGE (SDS)

## Product Details

Characteristics:	EFNB1, 28-237aa, Human, His tag, E.coli
Purity:	> 95 % by SDS - PAGE

## Target Details

Target:	Ephrin B1 (EFNB1)
Alternative Name:	EFNB1 ( <a href="#">EFNB1 Products</a> )
Background:	Ephrin-B1, also known as EFNB1, belongs to the Eph family. Ephrins, which act as ligands for Eph receptors, are cell-surface proteins that fall into two categories, ephrin-A and ephrin-B, based on their structure and function. EFNB1 proteins are transmembrane and have conserved cytoplasmic tyrosine residues that are phosphorylated upon interaction with an EphB receptor. Also, EFNB1 transduces outside-in signals through C-terminal protein interactions that effect

## Target Details

integrin-mediated cell attachment and migration. Recombinant human EFNB1 fused to His-tag at N-terminus. Synonyms: Ephrin-B1, CFND, CFNS, EFL3, Elk-L, EPLG2, LERK2. NCBI no.: NP\_004420

Molecular Weight: 25.3 kDa (231aa)

Pathways: [RTK Signaling](#)

## Application Details

Restrictions: For Research Use only

## Handling

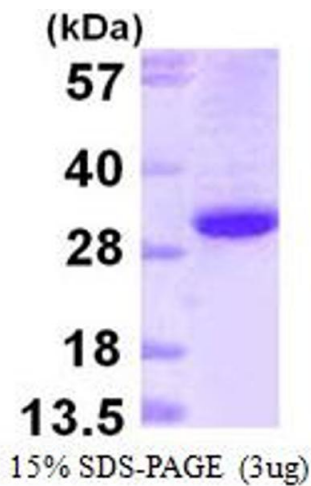
Format: Liquid

Concentration: 1 mg/ml (determined by Bradford assay)

Buffer: Liquid. In 20mM Tris-HCl buffer (pH 8.0) containing 0.4M Urea, 5% glycerol

Storage: 4 °C

## Images



### SDS-PAGE

Image 1.