

Datasheet for ABIN667542
CRCP Protein (AA 1-148) (His tag)



[Go to Product page](#)

1 Image

Overview

Quantity:	100 µg
Target:	CRCP
Protein Characteristics:	AA 1-148
Origin:	Human
Source:	Escherichia coli (E. coli)
Protein Type:	Recombinant
Purification tag / Conjugate:	This CRCP protein is labelled with His tag.
Application:	SDS-PAGE (SDS)

Product Details

Characteristics:	CRCP, 1-148aa, Human, His, E.coli
Purity:	> 95 % by SDS - PAGE

Target Details

Target:	CRCP
Alternative Name:	CRCP (CRCP Products)
Background:	CRCP, also known as CGRP-RCP, is an ubiquitous coupling protein for the calcitonin gene-related peptide and adrenomedullin receptors. It modulates ligand responsiveness in a variety of tissues. It has been DNA-directed RNA polymerase activity, catalytic activity and calcitonin receptor activity. Recombinant human CRCP protein, fused to His-tag at N-terminus, was expressed in E.coli and purified by using conventional chromatography. Synonyms: DNA-

Target Details

directed RNA polymerase III subunit RPC9, CGRP-RCP, CGRPRCP, MGC111194, RCP, RCP9.
NCBI no.: NP_055293

Molecular Weight: 19.0 kDa(168aa), confirmed by MALDI-TOF

Application Details

Restrictions: For Research Use only

Handling

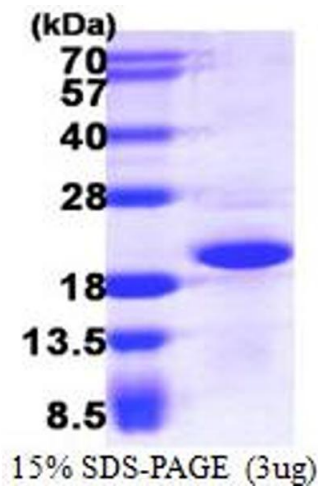
Format: Liquid

Concentration: 0.5 mg/ml (determined by Bradford assay)

Buffer: Liquid. 20mM Tris-HCl buffer (pH8.0) containing 20% glycerol, 0.1M NaCl,1mM DTT

Storage: 4 °C

Images



SDS-PAGE

Image 1.