



[Go to Product page](#)

Datasheet for ABIN667547
OLR1 Protein (AA 58-273)

1 Image

Overview

Quantity:	100 µg
Target:	OLR1
Protein Characteristics:	AA 58-273
Origin:	Human
Source:	Escherichia coli (E. coli)
Protein Type:	Recombinant
Application:	SDS-PAGE (SDS)

Product Details

Characteristics:	OLR1, 58-273aa, Human, E.coli
Purity:	> 90 % by SDS - PAGE

Target Details

Target:	OLR1
Alternative Name:	OLR1 (OLR1 Products)

Background: OLR1, also known as oxidized low density lipoprotein(Ox-LDL) receptor 1, is a type II membrane protein that is a member of the C-type lectin family and acts as a cell-surface receptor for Ox-LDL. Ox-LDL plays a role in early ather-osclerosis, which includes the transformation of monocyte-derived macro-phages to foam cells in atherosclerotic lesions. This protein may also trigger the activation of the NFkB signal transduction pathway. Synonyms: Oxidized low density lipoprotein(lectin-like)receptor 1, CLEC8A, LOX1, SCARE1. NCBI no.: NP_002534

Target Details

Molecular Weight: 24.7 kDa (216aa)

Application Details

Restrictions: For Research Use only

Handling

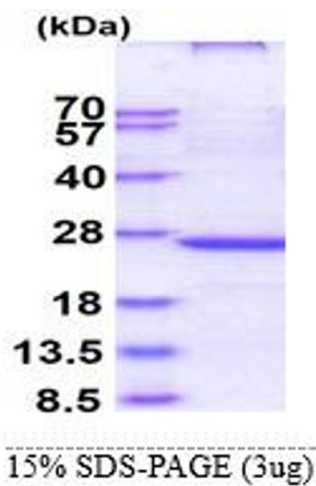
Format: Liquid

Concentration: 1.0 mg/ml (determined by Bradford assay)

Buffer: Liquid. 20mM Tris-HCl buffer (pH8.0) containing 5% glycerol, 0.4M Urea

Storage: 4 °C

Images



SDS-PAGE

Image 1.