



[Go to Product page](#)

Datasheet for ABIN667555

CENPH Protein (AA 136-247) (His tag)

1 Image

Overview

Quantity:	100 µg
Target:	CENPH
Protein Characteristics:	AA 136-247
Origin:	Human
Source:	Escherichia coli (E. coli)
Protein Type:	Recombinant
Purification tag / Conjugate:	This CENPH protein is labelled with His tag.
Application:	SDS-PAGE (SDS)

Product Details

Characteristics:	CENPH, 136-247aa, Human, His tag, E.coli
Purity:	> 90 % by SDS - PAGE

Target Details

Target:	CENPH
Alternative Name:	CENPH (CENPH Products)
Background:	CENPH, also known as centromere protein H, belongs to the centromere protein H family. This protein is component of the CENPA-NAC (nucleosome-associated) complex that plays a central role in assembly of kinetochore proteins. The CENPA-NAC complex recruits the CENPA-CAD (nucleosome distal) complex and may be involved in incorporation of newly synthesized CENPA into centromeres. Recombinant human CENPH protein, fused to His-tag at N-terminus,

Target Details

was expressed in E.coli and denatured using detergent during a conventional chromatography purification process. Synonyms: Centromere protein H, CENP H, Centromere protein H, ICEN35, Interphase centromere complex protein 35, Kinetochores protein CENP H, NNF1, MIND kinetochores complex component homolog, PMF1. NCBI no.: NP_075060

Molecular Weight: 15.5 kDa (133aa)

Application Details

Restrictions: For Research Use only

Handling

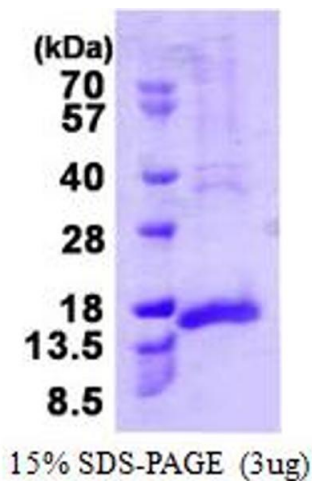
Format: Liquid

Concentration: 1.0 mg/ml (determined by UV spectroscopy at 280 nm)

Buffer: Liquid. 20mM Tris-HCl buffer (pH8.0) containing 10% glycerol

Storage: 4 °C

Images



SDS-PAGE

Image 1.