



[Go to Product page](#)

Datasheet for ABIN667586

## RAB24 Protein (AA 1-203) (His tag)

### 1 Image

#### Overview

Quantity:	100 µg
Target:	RAB24
Protein Characteristics:	AA 1-203
Origin:	Human
Source:	Escherichia coli (E. coli)
Protein Type:	Recombinant
Purification tag / Conjugate:	This RAB24 protein is labelled with His tag.
Application:	SDS-PAGE (SDS)

#### Product Details

Characteristics:	RAB24, 1-203aa, Human, His tag, E.coli
Purity:	> 90 % by SDS - PAGE

#### Target Details

Target:	RAB24
Alternative Name:	RAB24 ( <a href="#">RAB24 Products</a> )
Background:	RAB24 belongs to the small GTPase superfamily. Members of the Rab GTPase family regulate intracellular protein trafficking, but the specific function of RAB24 remains unknown. RAB24 is distributed in the endoplasmic reticulum/cis-Golgi region and on late endosomal structures, and this subcellular distribution pattern of RAB24 may indicate its involvement in autophagy-related processes. RAB24 presents unusual characteristics, including low intrinsic GTPase

## Target Details

activity, and is inefficiently prenylated when compared with other Rab proteins. Also suggested that RAB24 might play a unique role in the degradation of misfolded cellular proteins or trafficking of proteins to the nuclear envelope. Recombinant human RAB24 protein, fused to His-tag at N-terminus, was expressed in E.coli and purified by using conventional chromatography techniques. Synonyms: Ras-related protein Rab-24,. NCBI no.: NP\_570137

Molecular Weight: 25.7kDa (227aa), confirmed by MALDI-TOF

## Application Details

Restrictions: For Research Use only

## Handling

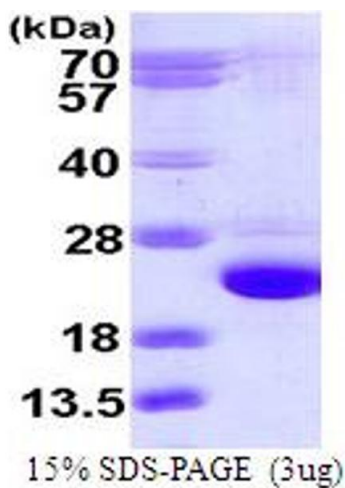
Format: Liquid

Concentration: 0.5mg/ml (determined by Bradford assay)

Buffer: Liquid. In 20mM Tris-HCl buffer (pH 8.0) containing 2mM DTT, 30% glycerol, 100mM NaCl, 1mM EDTA

Storage: 4 °C

## Images



### SDS-PAGE

Image 1.