

Datasheet for ABIN667596

**UBE2D3 Protein (AA 1-149) (His tag)**[Go to Product page](#)**1** Image

## Overview

Quantity:	50 µg
Target:	UBE2D3
Protein Characteristics:	AA 1-149
Origin:	Human
Source:	Escherichia coli (E. coli)
Protein Type:	Recombinant
Purification tag / Conjugate:	This UBE2D3 protein is labelled with His tag.
Application:	SDS-PAGE (SDS)

## Product Details

Characteristics:	UBE2D3, 1-149aa, Human, His tag, E.coli
Purity:	> 90 % by SDS - PAGE

## Target Details

Target:	UBE2D3
Alternative Name:	UBE2D3 ( <a href="#">UBE2D3 Products</a> )
Background:	<p>UBE2D3, also known as ubiquitin-conjugating enzyme E2 D3. The modification of proteins with ubiquitin is an important cellular mechanism for targeting abnormal or short-lived proteins for degradation. Ubiquitination involves at least three classes of enzymes: ubiquitin-activating enzymes, or E1s, ubiquitin-conjugating enzymes, or E2s, and ubiquitin-protein ligases, or E3s.</p> <p>This enzyme functions in the ubiquitination of the tumor-suppressor protein p53, which is</p>

Target Details

induced by an E3 ubiquitin-protein ligase. Recombinant human UBE2D3 protein, fused to His-tag at N-terminus, was expressed in E.coli and purified by using conventional chromatography.  
Synonyms: Ubiquitin-conjugating enzyme E2 D3, UBC5C, UBCH5C. NCBI no.: NP\_871622

Molecular Weight: 19.1 kDa (169aa), confirmed by MALDI-TOF

Pathways: [Activation of Innate immune Response](#), [Toll-Like Receptors Cascades](#)

Application Details

Restrictions: For Research Use only

Handling

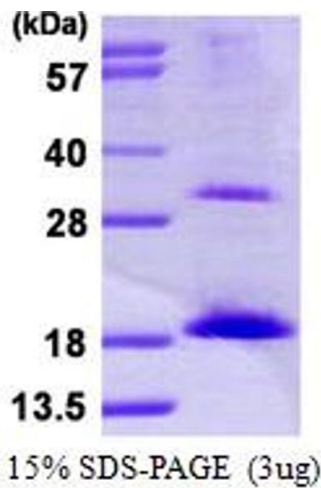
Format: Liquid

Concentration: 0.25 mg/ml (determined by Bradford assay)

Buffer: Liquid. 20mM Tris-HCl buffer (pH8.0) containing 40% glycerol, 0.15M NaCl, 1mM DTT

Storage: 4 °C

Images



SDS-PAGE

Image 1.