

Datasheet for ABIN667600

COPS8 Protein (AA 1-209) (His tag)[Go to Product page](#)**1** Image

Overview

Quantity:	100 µg
Target:	COPS8
Protein Characteristics:	AA 1-209
Origin:	Human
Source:	Escherichia coli (E. coli)
Protein Type:	Recombinant
Purification tag / Conjugate:	This COPS8 protein is labelled with His tag.
Application:	SDS-PAGE (SDS)

Product Details

Characteristics:	COPS8, 1-209aa, Human, His tag, E.coli
Purity:	> 90 % by SDS - PAGE

Target Details

Target:	COPS8
Alternative Name:	COPS8 (COPS8 Products)
Background:	COP9 signalosome complex subunit 8 isoform 1, also known as COPS8, is one of the eight subunits of COP9 signalosome, a highly conserved protein complex that functions as an important regulator in multiple signaling pathways. The structure and function of COP9 signalosome is similar to that of the 19S regulatory particle of 26S proteasome. COP9 signalosome has been shown to interact with SCF-type E3 ubiquitin ligases and act as a

Target Details

positive regulator of E3 ubiquitin ligases. Recombinant human COPS8 protein, fused to His-tag at N-terminus, was expressed in E.coli. Synonyms: COP9 signalosome complex subunit 8, COP9, CSN8, SGN8. NCBI no.: NP_006701

Molecular Weight: 25.3 kDa (229aa)

Pathways: [Cell Division Cycle](#)

Application Details

Restrictions: For Research Use only

Handling

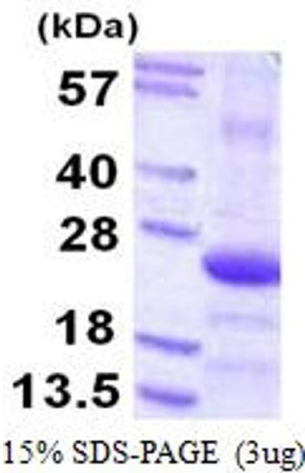
Format: Liquid

Concentration: 1 mg/ml (determined by Bradford assay)

Buffer: Liquid. In 20mM Tris-HCl buffer (pH 8.0) containing 0.4M Urea, 10% glycerol

Storage: 4 °C

Images



SDS-PAGE

Image 1.