

Datasheet for ABIN667601

GCSH Protein (AA 49-173) (His tag)[Go to Product page](#)**1** Image

Overview

Quantity:	100 µg
Target:	GCSH
Protein Characteristics:	AA 49-173
Origin:	Human
Source:	Escherichia coli (E. coli)
Protein Type:	Recombinant
Purification tag / Conjugate:	This GCSH protein is labelled with His tag.
Application:	SDS-PAGE (SDS)

Product Details

Characteristics:	GCSH, 49-173 aa , Human,His tag, E.coli
Purity:	> 95 % by SDS - PAGE

Target Details

Target:	GCSH
Alternative Name:	GCSH (GCSH Products)
Background:	The enzyme system for cleavage of glycine (glycine cleavage system) is composed of four mitochondrial protein components: P protein, H protein, T protein, and L protein. GCSH is the H protein, which transfers the methylamine group of glycine from the P protein to the T protein. Defects in this gene are a cause of nonketotic hyperglycinemia (NKH). Recombinant human GCSH protein, fused to His-tag at N-terminus, was expressed in E.coli and purified by using

Target Details

conventional chromatography techniques. Synonyms: Glycine cleavage system protein H (aminomethyl carrier), GCE, NKH. NCBI no.: NP_004474

Molecular Weight: 16.4 kDa (149aa), confirmed by MALDI-TOF

Application Details

Restrictions: For Research Use only

Handling

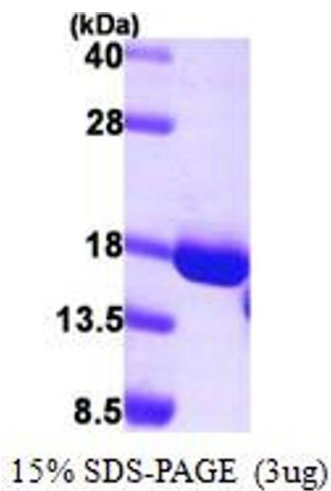
Format: Liquid

Concentration: 1 mg/ml (determined by Bradford)

Buffer: Liquid. In 20mM Tris-HCl buffer(pH 8.0) containing 10% glycerol, 1mM DTT, 0.15M NaCl.

Storage: 4 °C

Images



SDS-PAGE

Image 1.