

Datasheet for ABIN667606

RAB23 Protein (AA 1-234) (His tag)[Go to Product page](#)**1** Image

Overview

Quantity:	100 µg
Target:	RAB23
Protein Characteristics:	AA 1-234
Origin:	Human
Source:	Escherichia coli (E. coli)
Protein Type:	Recombinant
Purification tag / Conjugate:	This RAB23 protein is labelled with His tag.
Application:	SDS-PAGE (SDS)

Product Details

Characteristics:	RAB23, 1-234aa, Human, His tag E.coli
Purity:	> 90 % by SDS - PAGE

Target Details

Target:	RAB23
Alternative Name:	RAB23 (RAB23 Products)
Background:	<p>RAB23, also known as ras-related protein Rab23, is a member of the Rab family of proteins and localizes to the cytoplasmic side of the cell membrane. This protein is thought to play a role in intracellular protein transportation and signal transduction mediated by small GTPases.</p> <p>RAB23 is an essential negative regulator of the Sonic hedgehog signaling pathway. Mutations in the gene encoding RAB23 may result in Carpenter syndrome a condition characterized by</p>

Target Details

obesity, cardiac defects, polysyndactyly and craniosynostosis. Recombinant human RAB23 protein, fused to His-tag at N-terminus, was expressed in E.coli and purified by using conventional chromatography. Synonyms: Ras-related protein Rab-23, DKFZp781H0695, HSPC137, MGC8900. NCBI no.: NP_057361

Molecular Weight: 28.5 kDa (254aa), confirmed by MALDI-TOF

Pathways: [Tube Formation](#)

Application Details

Restrictions: For Research Use only

Handling

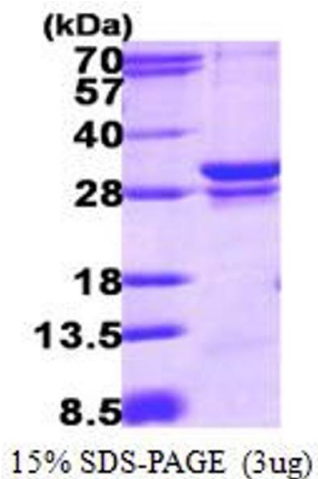
Format: Liquid

Concentration: 0.5 mg/ml (determined by Bradford assay)

Buffer: Liquid. 20mM Tris-HCl buffer (pH8.0) containing 30% glycerol, 1mM DTT, 0.1mM PMSF

Storage: 4 °C

Images



SDS-PAGE

Image 1.