

Datasheet for ABIN667612

SUMF1 Protein (AA 91-374) (His tag)[Go to Product page](#)**1** Image

Overview

Quantity:	50 µg
Target:	SUMF1
Protein Characteristics:	AA 91-374
Origin:	Human
Source:	Escherichia coli (E. coli)
Protein Type:	Recombinant
Purification tag / Conjugate:	This SUMF1 protein is labelled with His tag.
Application:	SDS-PAGE (SDS)

Product Details

Characteristics:	SUMF1, 91-374aa, Human, His tag, E.coli
Purity:	> 85 % by SDS - PAGE

Target Details

Target:	SUMF1
Alternative Name:	SUMF1 (SUMF1 Products)
Background:	<p>SUMF1 (Sulfatase-modifying factor 1) belongs to the SUMF family. SUMF1 is an enzyme that catalyzes the hydrolysis of sulfate esters by oxidizing a cysteine residue in the substrate sulfatase to an active site 3-oxoalanine residue, which is also known as C-alpha-formylglycine. Mutations in this gene cause multiple sulfatase deficiency, a lysosomal storage disorder.</p> <p>Recombinant human SUMF1 protein, fused to His-tag at N-terminus, was expressed in E.coli.</p>

Target Details

Synonyms: Sulfatase modifying factor 1, FGE. NCBI no.: NP_877437

Molecular Weight: 34.1kDa (304aa)

Application Details

Restrictions: For Research Use only

Handling

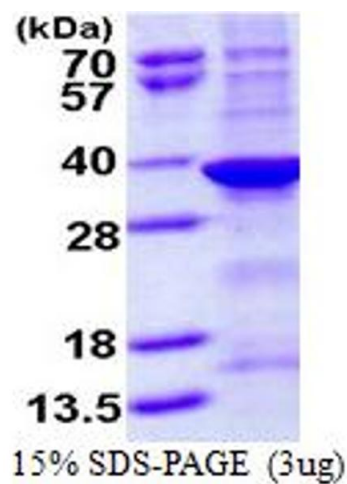
Format: Liquid

Concentration: 0.5mg/ml (determined by Bradford assay)

Buffer: Liquid. In 20mM Tris-HCl, pH8.0, 2M Urea, 20%Glycerol, 2mM DTT

Storage: 4 °C

Images



SDS-PAGE

Image 1.