

Datasheet for ABIN667623
LHPP Protein (AA 1-270) (His tag)



[Go to Product page](#)

1 Image

Overview

Quantity:	50 µg
Target:	LHPP
Protein Characteristics:	AA 1-270
Origin:	Human
Source:	Escherichia coli (E. coli)
Protein Type:	Recombinant
Purification tag / Conjugate:	This LHPP protein is labelled with His tag.
Application:	SDS-PAGE (SDS)

Product Details

Characteristics:	LHPP, 1-270aa, Human, His tag, E.coli
Purity:	> 90 % by SDS - PAGE

Target Details

Target:	LHPP
Alternative Name:	LHPP (LHPP Products)
Background:	Phospholysine phosphohistidine inorganic pyrophosphate phosphatase, also known as LHPP, is a member of the HAD-like hydrolase superfamily. It is a unique enzyme that hydrolyzes not only oxygen-phosphorus bonds in inorganic pyrophosphate but also nitrogen-phosphorus bonds in phospholysine, phosphohistidine and imidodiphosphate in vitro. LHPP is expressed in liver, kidney and moderately in brain. Recombinant human LHPP protein, fused to His-tag at N-

Target Details

terminus, was expressed in E.coli and purified by using conventional chromatography techniques. Synonyms: phospholysine phosphohistidine inorganic pyrophosphate phosphatase, HDHD2B. NCBI no.: NP_071409

Molecular Weight: 33.5 kDa (307aa) confirmed by MALDI-TOF

Application Details

Restrictions: For Research Use only

Handling

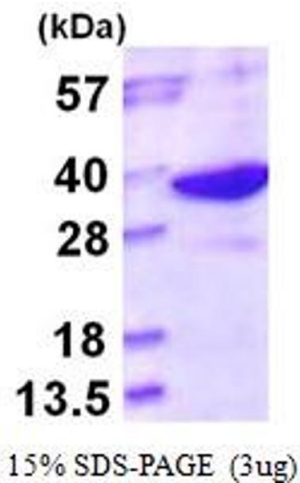
Format: Liquid

Concentration: 1 mg/ml (determined by Bradford assay)

Buffer: Liquid. In 20mM Tris-HCl buffer (pH 8.0) containing 1mM DTT, 10% glycerol, 0.1M NaCl

Storage: 4 °C

Images



SDS-PAGE

Image 1.