

Datasheet for ABIN667624

**PSMB2 Protein (AA 1-201) (His tag)**[Go to Product page](#)**1** Image

## Overview

Quantity:	50 µg
Target:	PSMB2
Protein Characteristics:	AA 1-201
Origin:	Human
Source:	Escherichia coli (E. coli)
Protein Type:	Recombinant
Purification tag / Conjugate:	This PSMB2 protein is labelled with His tag.
Application:	SDS-PAGE (SDS)

## Product Details

Characteristics:	PSMB2, 1-201aa, Human, His tag, E.coli
Purity:	> 90 % by SDS - PAGE

## Target Details

Target:	PSMB2
Alternative Name:	PSMB2 ( <a href="#">PSMB2 Products</a> )
Background:	Proteasome subunit beta type-2, also known as PSMB2, is a member of the proteasome T1B family, which is a 20S core beta subunit. The proteasome is a multicatalytic proteinase complex with a highly ordered ring-shaped 20S core structure. Proteasomes are distributed throughout eukaryotic cells at a high concentration and cleave peptides in an ATP/ubiquitin-dependent process in a non-lysosomal pathway. An essential function of a modified

## Target Details

proteasome, the immunoproteasome, is the processing of class I MHC peptides. Recombinant human PSMB2 protein, fused to His-tag at N-terminus, was expressed in E.coli and purified by using conventional chromatography techniques. Synonyms: Proteasome subunit beta type-2, HC7-I. NCBI no.: NP\_002785

Molecular Weight: 24.9 kDa (221aa) confirmed by MALDI-TOF

Pathways: [Mitotic G1-G1/S Phases](#), [DNA Replication](#), [Synthesis of DNA](#)

## Application Details

Restrictions: For Research Use only

## Handling

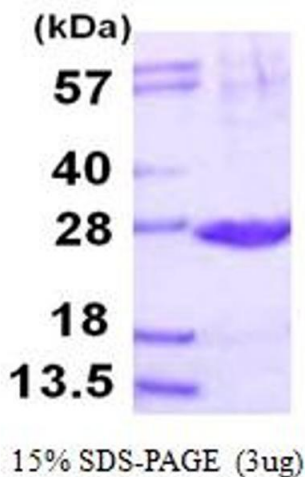
Format: Liquid

Concentration: 0.5 mg/ml (determined by Bradford assay)

Buffer: Liquid. In 20mM Tris-HCl buffer (pH 8.0) containing 1mM DTT, 30% glycerol, 0.1M NaCl

Storage: 4 °C

## Images



### SDS-PAGE

Image 1.