

Datasheet for ABIN667630

Cyclin G1 Protein (CCNG1) (AA 1-295) (His tag)[Go to Product page](#)**1** Image

Overview

Quantity:	50 µg
Target:	Cyclin G1 (CCNG1)
Protein Characteristics:	AA 1-295
Origin:	Human
Source:	Escherichia coli (E. coli)
Protein Type:	Recombinant
Purification tag / Conjugate:	This Cyclin G1 protein is labelled with His tag.
Application:	SDS-PAGE (SDS)

Product Details

Characteristics:	CCNG1, 1-295aa, Human, His tag, E.coli
Purity:	> 85 % by SDS - PAGE

Target Details

Target:	Cyclin G1 (CCNG1)
Alternative Name:	CCNG1 (CCNG1 Products)
Background:	<p>CCNG1, also known as cyclin-G1, is a member of the cyclin family and contains the cyclin box. It may play a role in growth regulation and be associated with G2/M phase arrest in response to DNA damage. It may be an intermediate by which p53 mediates its role as an inhibitor of cellular proliferation. Recombinant human CCNG1 protein, fused to His-tag at N-terminus, was expressed in E.coli and purified by using conventional chromatography. Synonyms: Cyclin-G1,</p>

Target Details

	CCNG, CYCG1. NCBI no.: NP_954854
Molecular Weight:	36.2 kDa (315aa) confirmed by MALDI-TOF
Pathways:	p53 Signaling

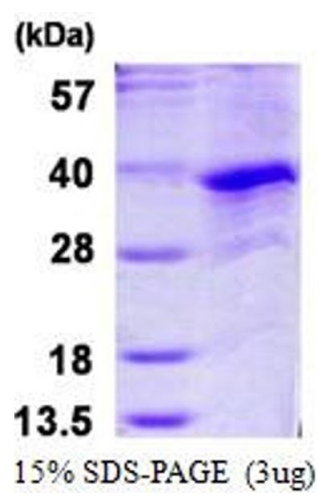
Application Details

Restrictions:	For Research Use only
---------------	-----------------------

Handling

Format:	Liquid
Concentration:	0.25 mg/ml (determined by Bradford assay)
Buffer:	Liquid. 20mM Tris-HCl buffer (pH8.0) containing 50% glycerol, 0.2M NaCl, 5mM DTT
Storage:	4 °C

Images



SDS-PAGE

Image 1.