

Datasheet for ABIN667631

CST1 Protein (AA 21-141) (His tag)[Go to Product page](#)**1** Image

Overview

Quantity:	100 µg
Target:	CST1
Protein Characteristics:	AA 21-141
Origin:	Human
Source:	Escherichia coli (E. coli)
Protein Type:	Recombinant
Purification tag / Conjugate:	This CST1 protein is labelled with His tag.
Application:	SDS-PAGE (SDS)

Product Details

Characteristics:	CST1, 21-141aa, Human, His tag, E.coli
Purity:	> 95 % by SDS - PAGE

Target Details

Target:	CST1
Alternative Name:	CST1 (CST1 Products)
Background:	CST1 (Cystatin-SN) is a member of the type 2 salivary cystatin family found in a variety of fluids and secretions, including plasma, tears, and saliva. The cystatin superfamily encompasses proteins that contain multiple cystatin-like sequences. Some of the members are active cysteine protease inhibitors, while others have lost or perhaps never acquired this inhibitory activity. CST1 was upregulated in cancerous lesions of gastric cancer tissues compared to

Target Details

noncancerous regions and clinicopathological analysis showed a significant correlation between high expression of CST1. Recombinant human CST1 protein, fused to His-tag at N-terminus, was expressed in E.coli and purified by using conventional chromatography techniques. Synonyms: cystatin SN, Cystain-SA-I, Cystatin-1, Cystatin-SN, Salivary cystatin-SA-1. NCBI no.: NP_001889

Molecular Weight: 16.9kDa (145aa), confirmed by MALDI-TOF

Application Details

Restrictions: For Research Use only

Handling

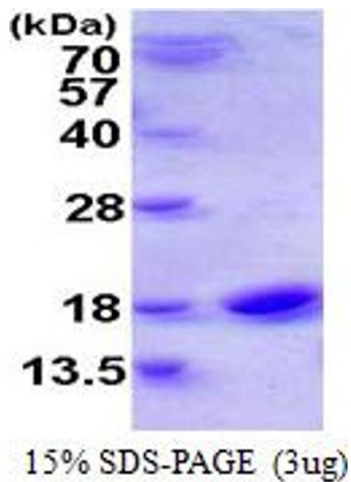
Format: Liquid

Concentration: 1mg/ml (determined by Bradford assay)

Buffer: Liquid. In 20mM Tris-HCl buffer (pH 8.0) containing 2mM DTT, 10% glycerol, 100mM NaCl

Storage: 4 °C

Images



SDS-PAGE

Image 1.